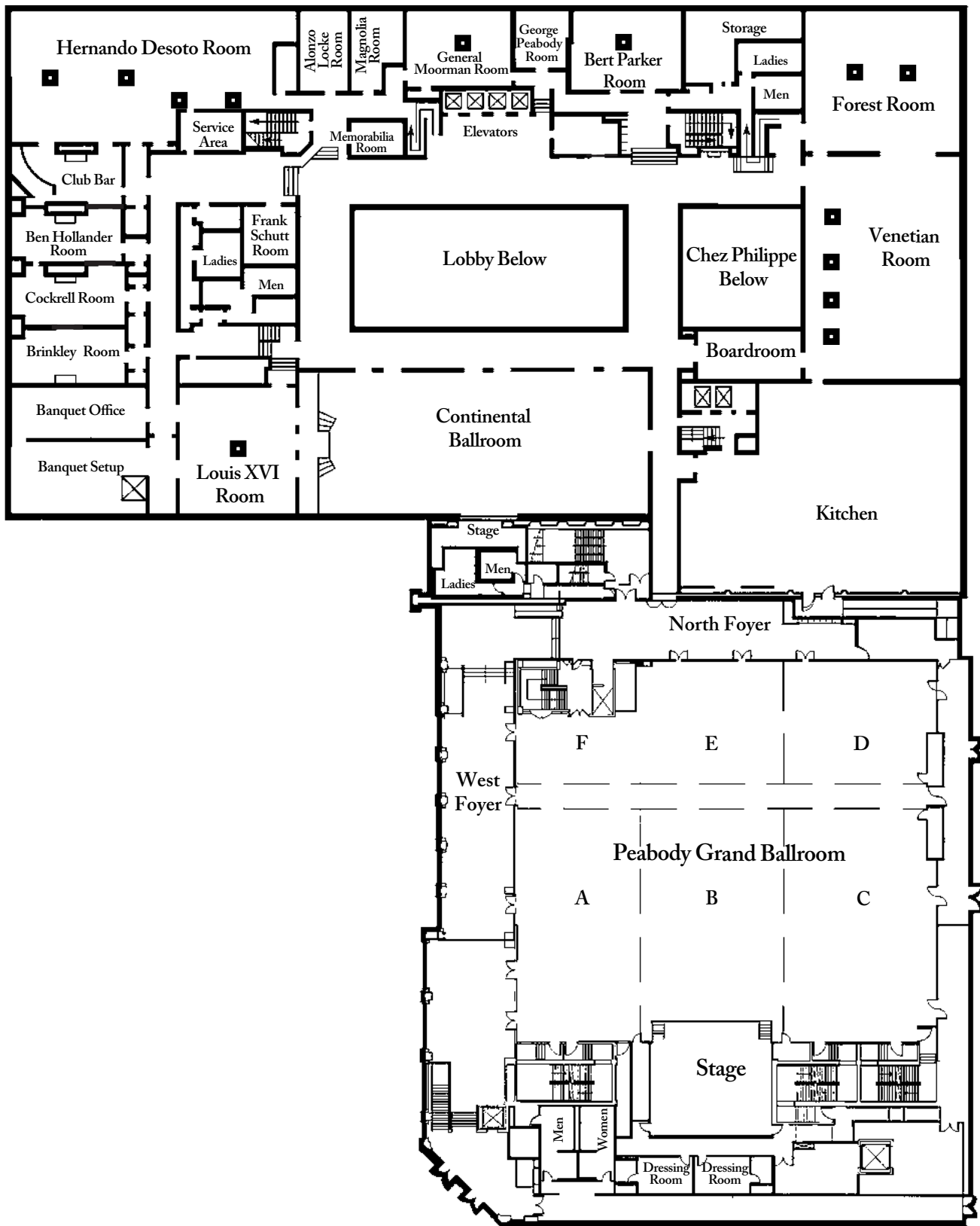


The Mezzanine Level



The Mezzanine Level

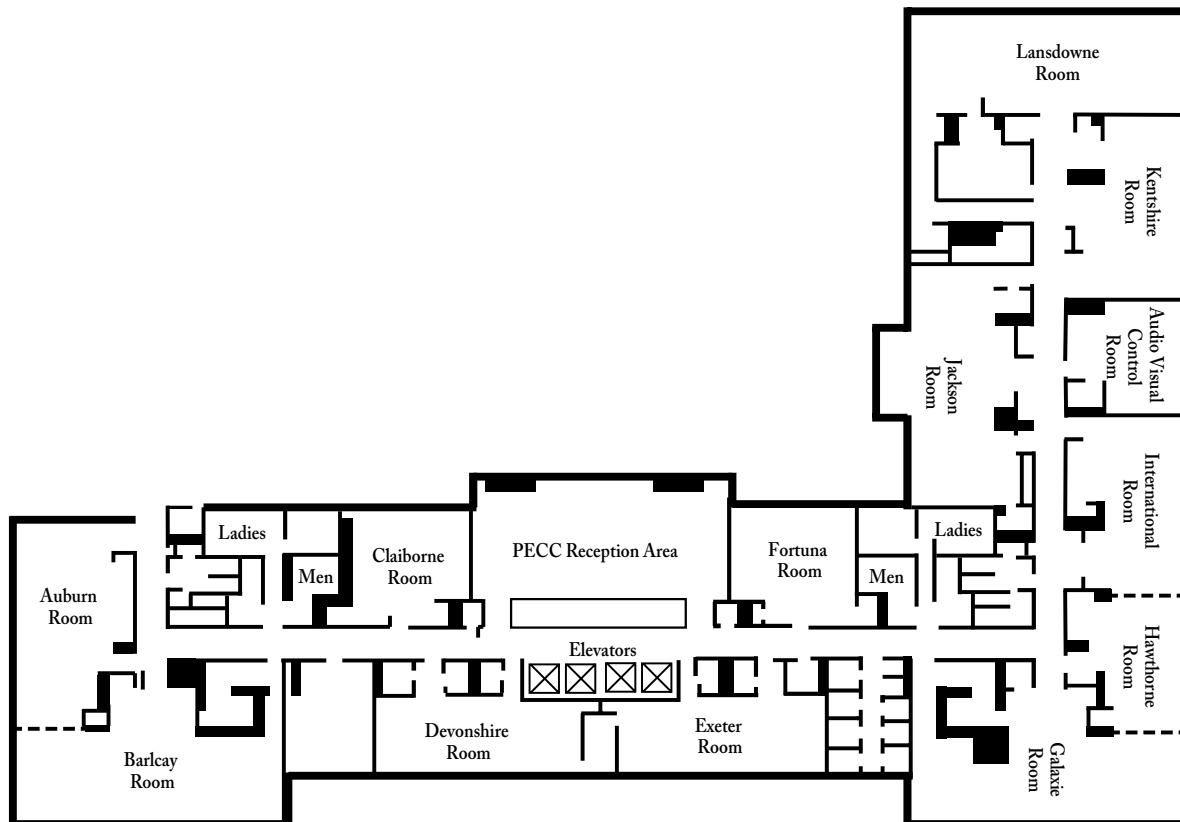
Room	Dimensions	Square Footage	Ceiling Height	Banquet Rounds of 10	Reception Style	Class Room ▲	Theatre Style	Conf. Style	U-Shape	Booths 10x10
Alonzo Locke	26'x18'	468	10'	20	30	18	36	16	16	N/A
Ben Hollander	39'6"x18'6"	730	11'6"	30	40	24	50	25	26	N/A
Bert Parker •	36'6"x26'	952	11'	50	60	40	60	24	21	N/A
The Board Room	32'x15'	480	12'	N/A	N/A	N/A	N/A	22	N/A	N/A
Brinkley Room	39'6"x17'	671	10'	30	40	24	50	25	26	N/A
Cockrell Room	38'6"x18'6"	712	10'6"	30	40	24	50	25	26	N/A
Continental Ballroom	112'x47'	5,264	19'8"	350	700	240	600	N/A	70	N/A
Forest Room •	56'x44'	2,264	15'9"	120	200	70	150	40	32	N/A
Frank Schutt	20'x17'	340	12'	10	25	9	15	8	9	N/A
General Moorman •	34'x25'	850	11'	50	60	40	60	24	18	N/A
George Peabody	30'x18'6"	372	10'	20	25	12	25	15	15	N/A
Hernando DeSoto •	77'6"x41'6"	3,228	11'	170	250	70	150	40	30	N/A
Louis XVI •	36'x42'	1,512	12'	100	150	40	75	30	30	N/A
Magnolia Room	25'6"x18'6"	476	16'1"	20	20	9	16	10	10	N/A
Peabody Grand Ballroom	135'x125'	16,264	15'5"	1240	3000	600	2100	N/A	N/A	100
Grand Ballroom A	77'x41'	3,144	15'5"	210	470	135	300	50	50	24
Grand Ballroom B	77'x47'	3,387	15'5"	210	470	135	335	50	50	24
Grand Ballroom C	77'x47'	3,834	15'5"	210	470	144	335	50	50	24
Grand Ballroom D	39'x47'	1,950	15'5"	120	160	84	160	40	40	15
Grand Ballroom E	39'x47'	1,875	15'5"	120	160	84	160	40	40	15
Grand Ballroom F	21'x41'	945	15'5"	40	60	30	60	20	28	8
Venetian Room •	76'x45'6"	4,256	15'9"	220	350	120	300	50	50	26

▲ Classroom based on 3 persons per 8 ft. table • Columns in the room.

Peabody Executive Conference Center

Room	Dimensions	Square Footage	Ceiling Height	Banquet Rounds of 10	Reception Style	Class Room ▲	Theatre Style	Conf. Style
Auburn	42'x16'	672	9'	40	75	26	50	30
Barclay	55'x17'	935	9'	50	100	32	60	40
Claiborne	25'x17'	425	9'	N/A	N/A	N/A	N/A	12
Devonshire	43'x16'	688	9'	N/A	N/A	N/A	N/A	10
Exeter	42'x16'	672	9'	N/A	N/A	N/A	N/A	10
Fortuna	25'x16'	400	9'	N/A	N/A	N/A	N/A	12
Galaxie	57'x16'	912	9'	50	100	32	60	40
Hawthorne	24'x14'	336	9'	20	35	12	30	12
International	39'x14'	546	9'	40	50	26	40	30
Jackson	49'x17'	833	9'	40 ♦	75	30	50	N/A
Kentshire	41'x15'	615	9'	30	50	20	40	30
Lansdowne	56'x20'	1,129	9'	50	100	32	60	40

▲ Classroom based on 2 persons per 6 ft. table ♦ Squares of 6

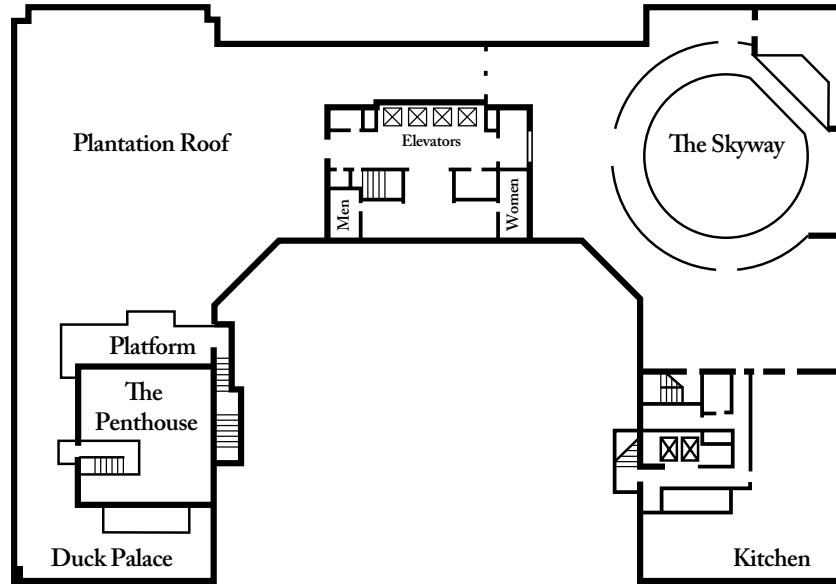


The Skyway

Room	Dimensions	Square Footage	Ceiling Height	Banquet Rounds of 10	Reception Style	Class Room ▲	Theatre Style	Conf. Style	U-Shape	Booths 10x10
The Skyway	N/A	7,600	N/A	400	700	100	220	40	40	N/A

▲ Classroom based on 2 persons per 6 ft. table

The Skyway & Planation. Roof



Tennessee Exhibit Hall

Room	Dimensions	Square Footage	Ceiling Height	Banquet Rounds of 10	Reception Style	Class Room ▲	Theatre Style	Conf. Style	U-Shape	Booths 10x10
Exhibit Hall	124'x98'	11,100	10'6"	730	75	230	450	N/A	N/A	50

▲ Classroom based on 2 persons per 6 ft. table

