



HISTORIC HOTELS of AMERICA

NATIONAL TRUST FOR HISTORIC PRESERVATION®

New Member Recognition Luncheon

Sponsored by

Coca-Cola®



Omni Homestead Resort

Hot Springs, Virginia

- ❖ Rooms: 483
- ❖ Historic Classification: Original Hotel
- ❖ Décor Style: Traditional
- ❖ Architecture: Colonial Revival
- ❖ Dates from 1766
- ❖ Current Structure Built: 1906
- ❖ Designated a National Historic Landmark by the U.S. Secretary of the Interior



Tubac Golf Resort & Spa

Tubac, Arizona

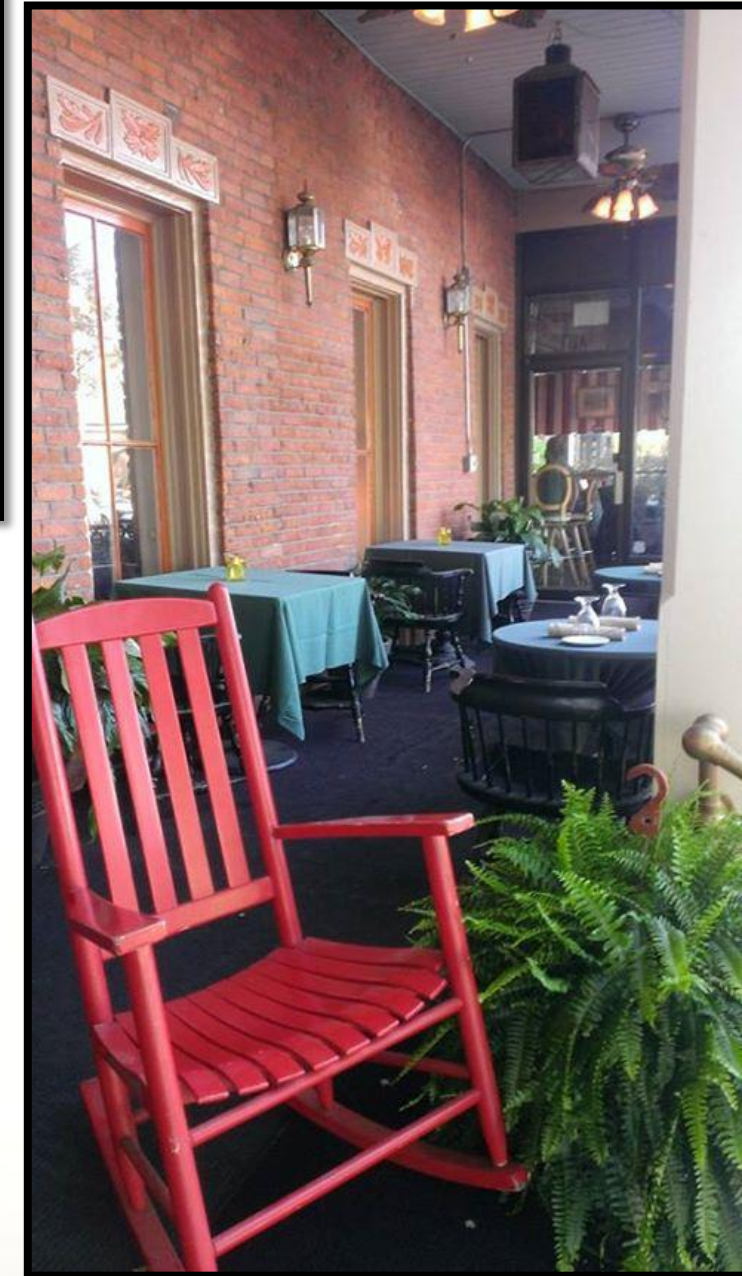
- ❖ Rooms: 99
- ❖ Historic Classification: Historic Conversion
- ❖ Décor Style: Traditional
- ❖ Architecture: Spanish Colonial Revival
- ❖ Built: 1789



Inn at Saratoga

Saratoga Springs, New York

- ❖ Rooms: 42
- ❖ Historic Classification:
Original Hotel
- ❖ Décor Style: Traditional
- ❖ Architecture: Queen Anne
- ❖ Built: 1843



The Sayre Mansion

Bethlehem, Pennsylvania

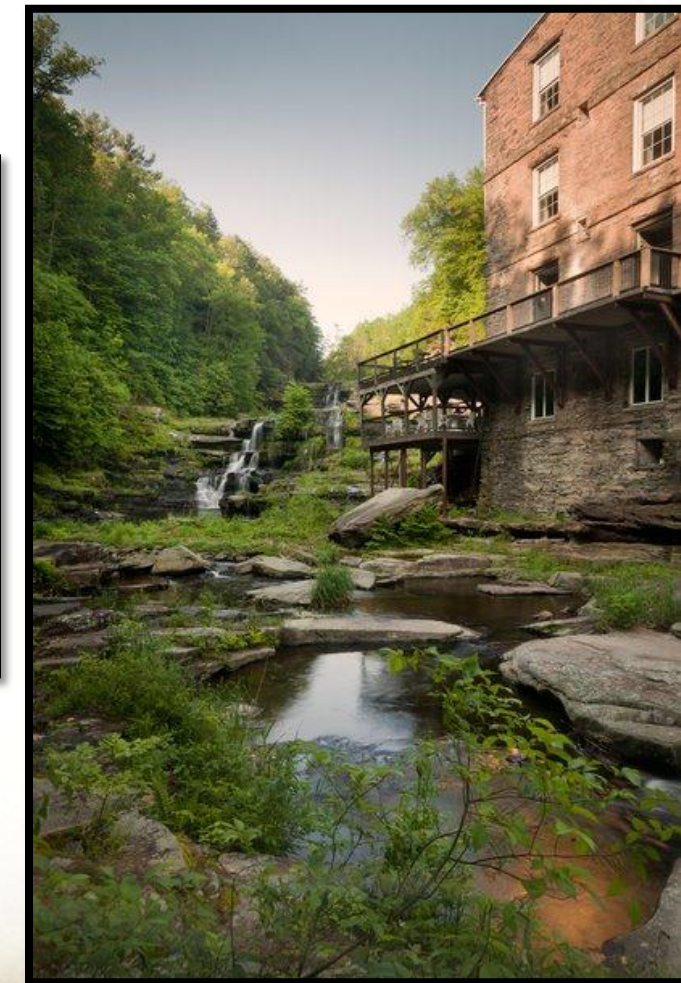
- ❖ Rooms: 22
- ❖ Historic Classification:
Historic Conversion
- ❖ Décor Style: Traditional
- ❖ Architecture: Gothic
Revival
- ❖ Built: 1858



Ledges Hotel

Hawley, Pennsylvania

- ❖ Rooms: 19
- ❖ Historic Classification:
Historic Conversion
- ❖ Décor Style: Contemporary
- ❖ Architecture: Federal
- ❖ Built: 1890
- ❖ Listed in the National
Register of Historic Places



Moana Surfrider, A Westin Resort & Spa *Honolulu, Hawaii*

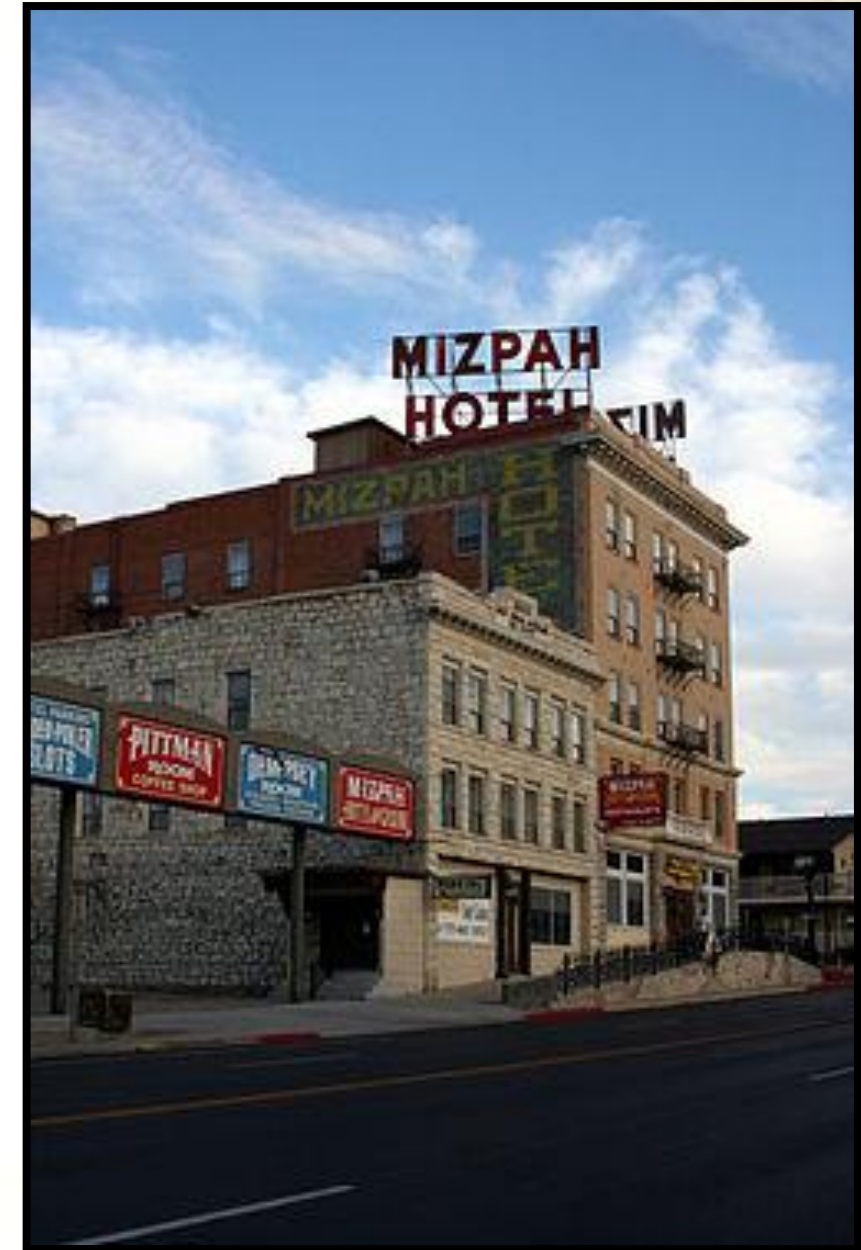
- ❖ Rooms: 794
- ❖ Historic Classification: Original Hotel
- ❖ Décor Style: Contemporary
- ❖ Architecture: Hawaiian Gothic
- ❖ Built: 1901
- ❖ Listed in National Register of Historic Places



Mizpah Hotel

Tonopah, Nevada

- ❖ Rooms: 47
- ❖ Historic Classification:
Original Hotel
- ❖ Décor Style: Traditional
- ❖ Architecture: Colonial
Revival
- ❖ Built: 1907
- ❖ Listed in the National
Register of Historic Places



Omni Grove Park Inn

Asheville, North Carolina

- ❖ Rooms: 514
- ❖ Historic Classification: Original Hotel
- ❖ Décor Style: Traditional
- ❖ Architecture: Arts & Crafts
- ❖ Built: 1913
- ❖ Listed in the National Register of Historic Places



Lake McDonald Lodge

Glacier National Park, Montana

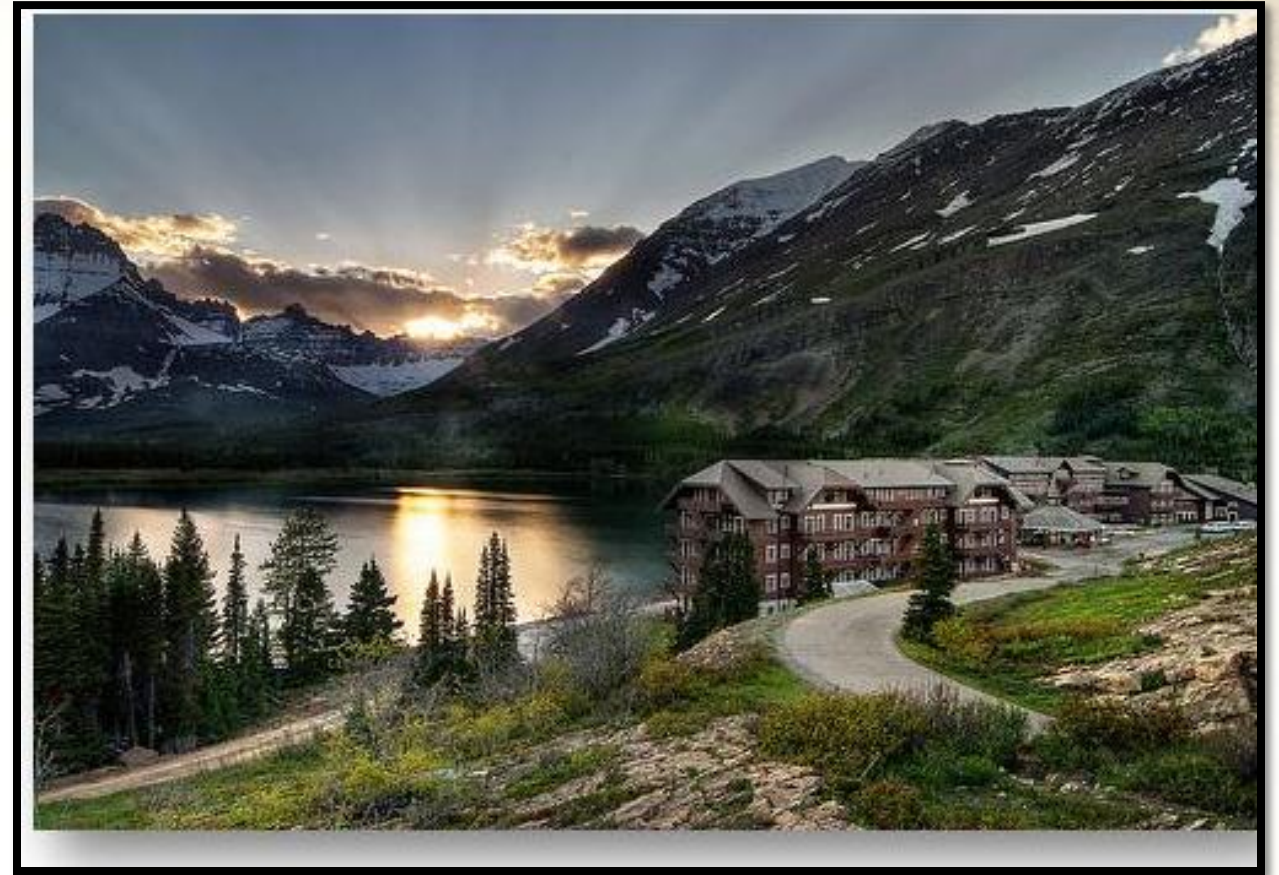
- ❖ Rooms: 100
- ❖ Historic Classification: Original Hotel
- ❖ Décor Style: Traditional
- ❖ Architecture: Swiss Chalet
- ❖ Built: 1913
- ❖ Designated a National Historic Landmark by the U.S. Secretary of the Interior



Many Glacier Hotel

Glacier National Park, Montana

- ❖ Rooms: 215
- ❖ Historic Classification: Original Hotel
- ❖ Décor Style: Traditional
- ❖ Architecture: Swiss Chalet
- ❖ Built: 1915
- ❖ Designated a National Historic Landmark by the U.S. Secretary of the Interior



The Jefferson *Washington, D.C.*

- ❖ Rooms: 96
- ❖ Historic Classification: Historic Conversion
- ❖ Décor Style: Traditional
- ❖ Architecture: Beaux-Arts
- ❖ Built: 1923



Hotel Lana'i

Lana'i City, Hawaii

- ❖ Rooms: 11
- ❖ Historic Classification:
Historic Conversion
- ❖ Décor Style: Traditional
- ❖ Architecture: Hawaiian
Plantation
- ❖ Built: 1923



The Westin Poinsett

Greenville, South Carolina

- ❖ Rooms: 200
- ❖ Historic Classification:
Original Hotel
- ❖ Décor Style: Blended
- ❖ Architecture: Beaux-Arts
- ❖ Built: 1925



Benbow Inn

Garberville, California

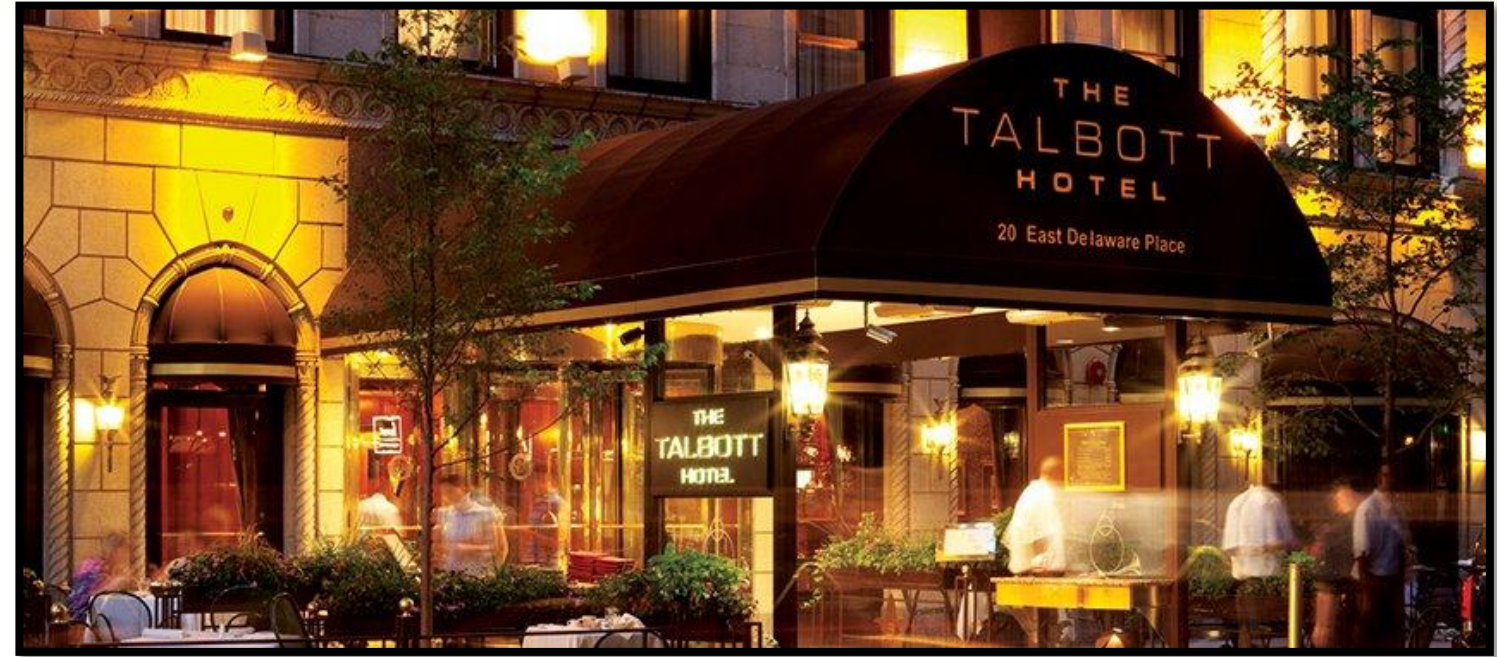
- ❖ Rooms: 55
- ❖ Historic Classification: Original Hotel
- ❖ Décor Style: Traditional
- ❖ Architecture: Tudor Revival
- ❖ Built: 1926
- ❖ Listed in the National Register of Historic Places



The Talbott Hotel

Chicago, Illinois

- ❖ Rooms: 149
- ❖ Historic Classification: Original Hotel
- ❖ Décor Style: Blended
- ❖ Architecture: Chicago School
- ❖ Built: 1927



The Fairmont Sonoma Mission Inn & Spa

Sonoma, California



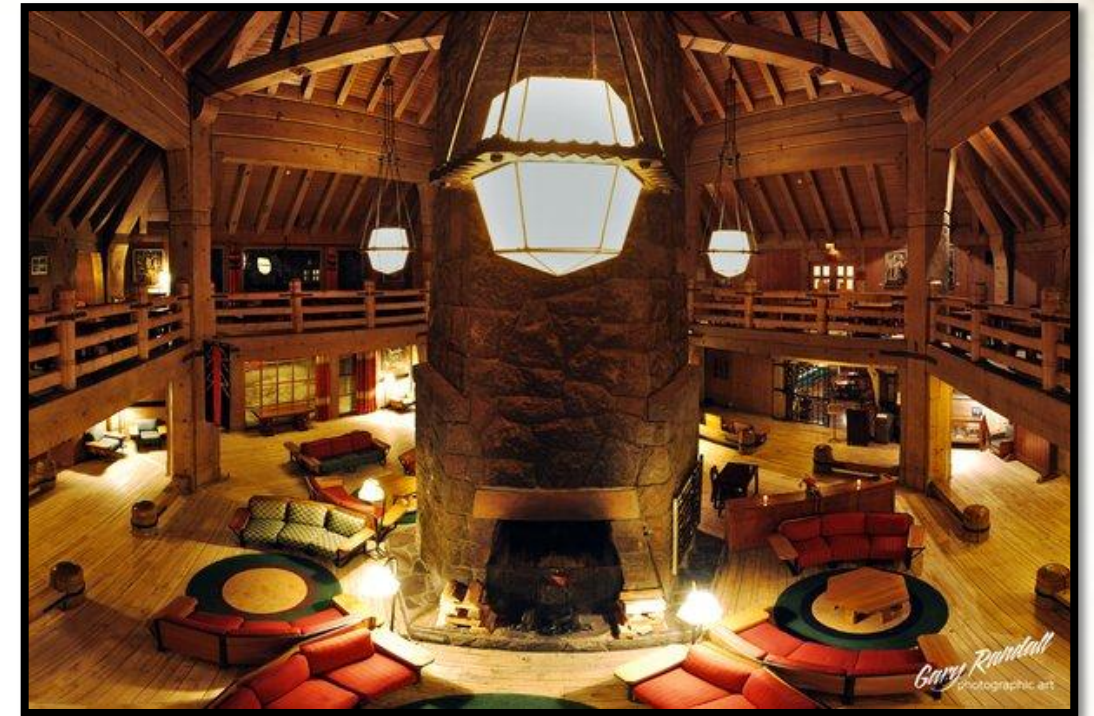
- ❖ Rooms: 228
- ❖ Historic Classification: Original Hotel
- ❖ Décor Style: Blended
- ❖ Architecture: Spanish Mission Revival Style
- ❖ Built: 1927



Timberline Lodge

Timberline Lodge, Oregon

- ❖ Rooms: 70
- ❖ Historic Classification:
Original Hotel
- ❖ Décor Style: Traditional
- ❖ Architecture: Cascadian
- ❖ Built: 1937
- ❖ Designated a National
Historic Landmark by the
U.S. Secretary of the Interior



Inn at Price Tower

Bartlesville, Oklahoma

- ❖ Rooms: 19
- ❖ Historic Classification: Historic Conversion
- ❖ Décor Style: Contemporary
- ❖ Architecture: Frank Lloyd Wright Mid-Century Modern
- ❖ Built: 1956
- ❖ Designated a National Historic Landmark by the U.S. Secretary of the Interior



Omni La Costa Resort & Spa *Carlsbad, California*

- ❖ Rooms: 473
- ❖ Historic Classification: Original Hotel
- ❖ Décor Style: Blended
- ❖ Architecture: Spanish Colonial Revival
- ❖ Built: 1963



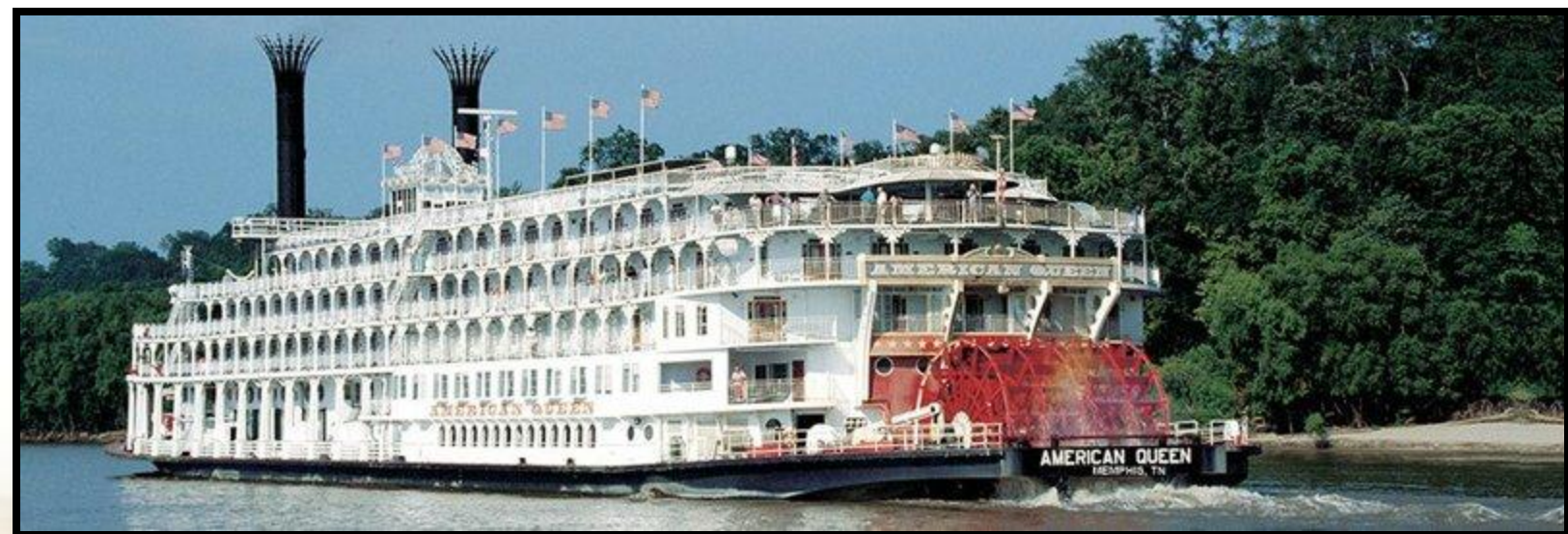
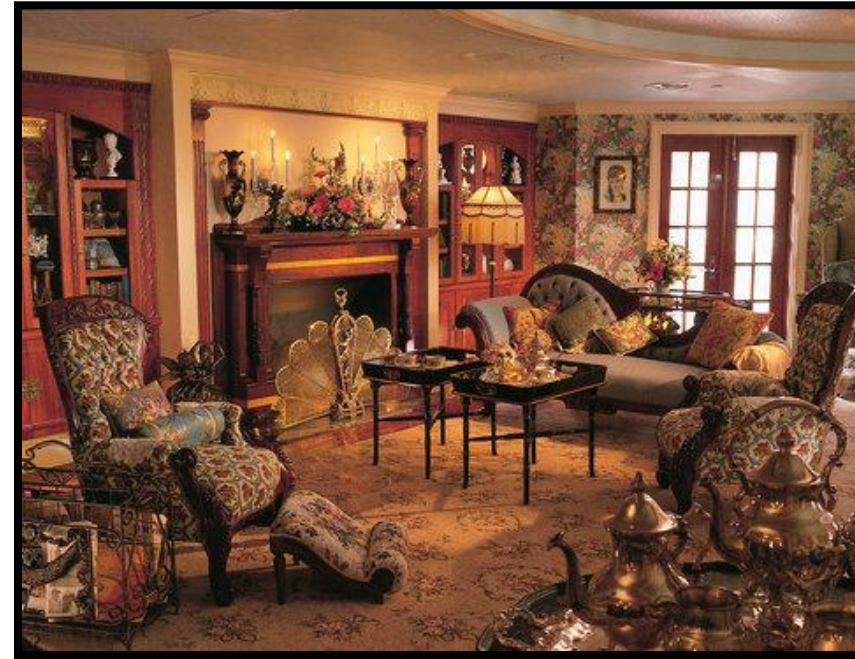
HISTORIC HOTELS of AMERICA

NATIONAL TRUST FOR HISTORIC PRESERVATION®

The American Queen

*Upper Mississippi, Lower Mississippi
Ohio, and Tennessee Rivers*

- ❖ Staterooms: 222
- ❖ Historic Classification: Original Hotel
- ❖ Décor Style: Traditional
- ❖ Architecture: Paddle Wheeler Steamboat
- ❖ 19th Century Reproduction

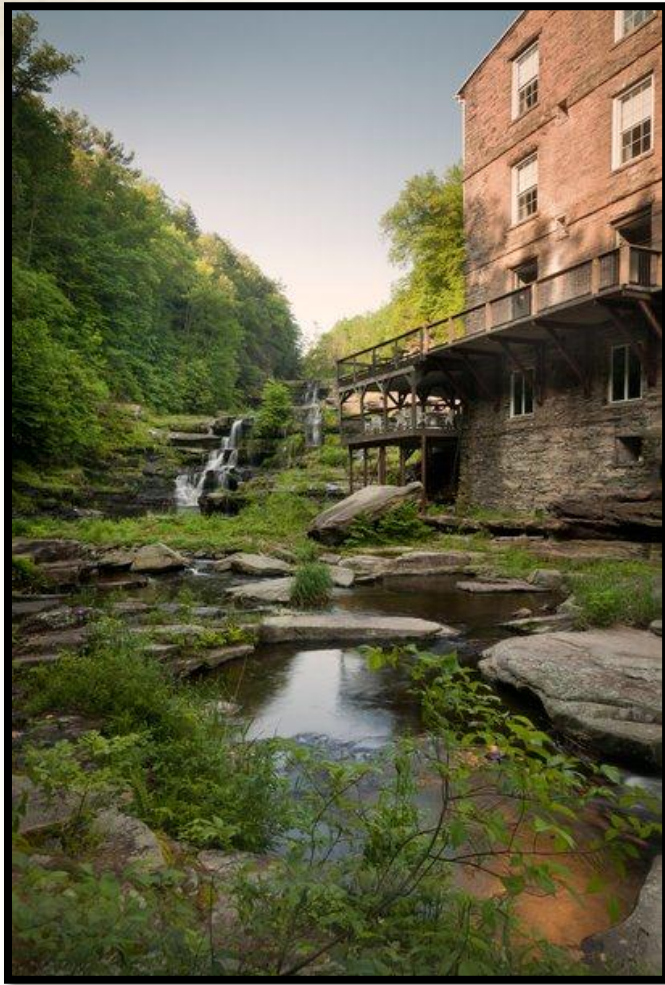


The American Empress

Columbia and Snake Rivers

- ❖ Staterooms: 222
- ❖ Historic Classification: Original Hotel
- ❖ Décor Style: Traditional
- ❖ Architecture: Paddle Wheeler Steamboat
- ❖ 19th Century Reproduction





HISTORIC HOTELS of AMERICA

NATIONAL TRUST FOR HISTORIC PRESERVATION®

*Ranging in age from
50 Years to 247 Years*

**Welcome
Class of 2013**

