

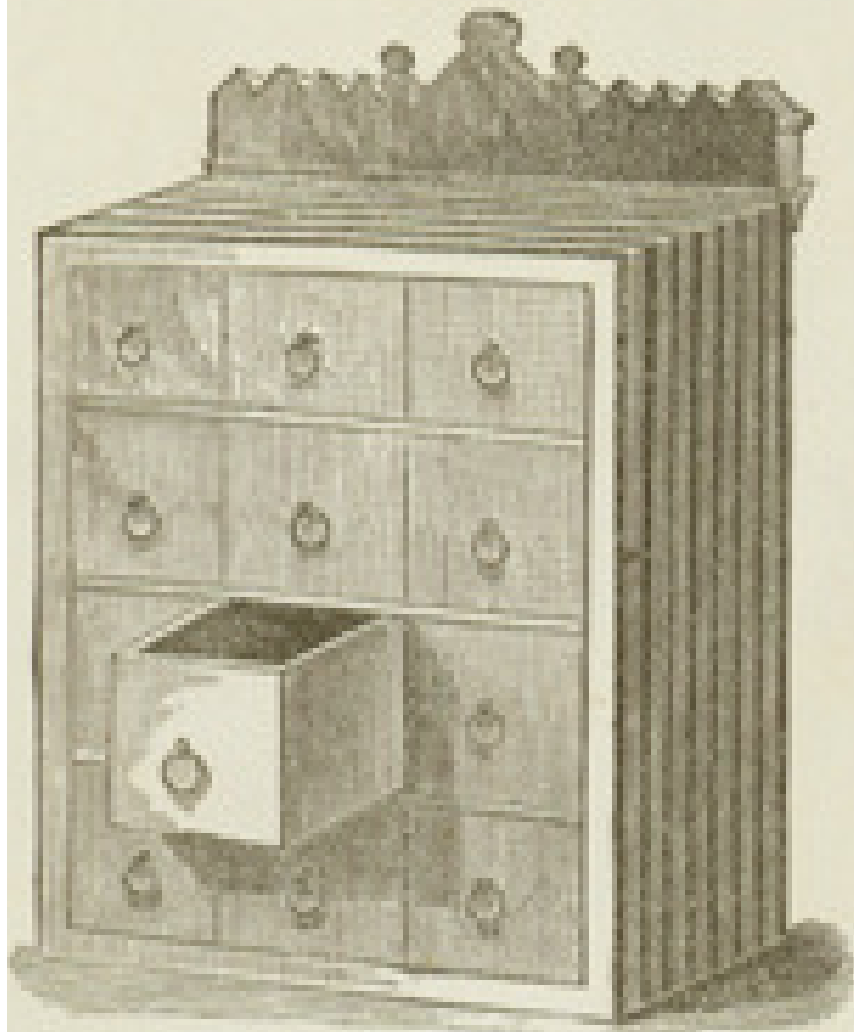


**One Man's Vision:  
Building  
a Model Town**

**Milton S. Hershey**







Patented March 12th, 1881.  
Back View.

ESTABLISHED IN 1839.

OFFICE OF

**MILTON S. HERSHEY,**

—MANUFACTURER OF—

SPECIALTIES IN FINE CONFECTION

Sole Manufacturer of the Celebrated H. H. Cough Drops.

1217 TO 1225 BEACH ST

*Philadelp.*

---

# Caramels Only.

---

Consisting of THIRTY VARIETIES.

---

THE ONLY ORIGINAL UNWRAPPED CARAMELS

PACKED 196 IN A BOX,

ARE MANUFACTURED BY THE

Lancaster Caramel Company,

LANCASTER, PA.

N. Y. Office, 383 Canal Street.

❖ ❖ And bear the Trade Mark, ❖ ❖



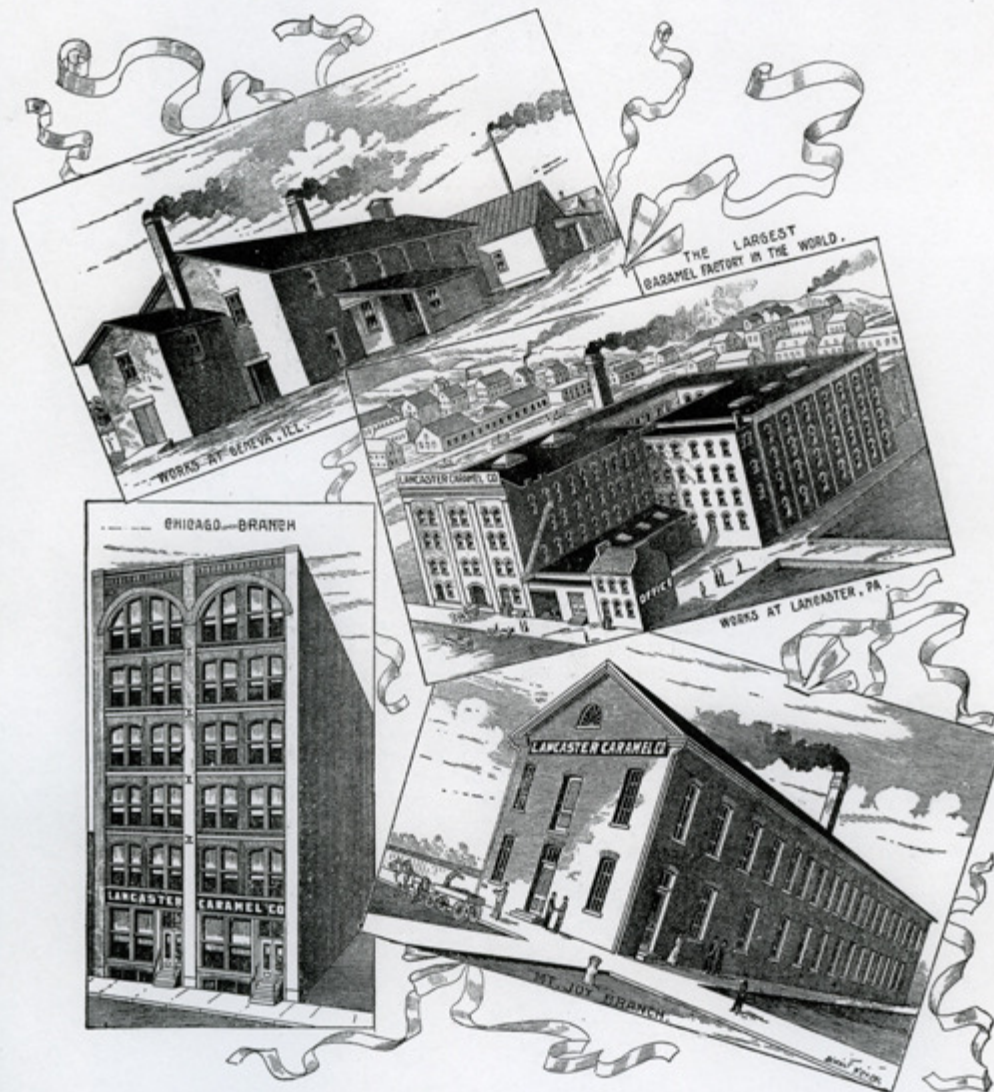
❖ ❖ All others are imitations. ❖ ❖

Insist on having this brand if you wish to increase your trade on Caramels.

---



# CARAMELS ONLY.



— FACTORIES OF —

## LANCASTER CARAMEL CO.

Please mention the CONFECTIONERS' JOURNAL when writing Advertisers.







**THE**  
**LANCASTER CARAMEL CO.**

Home Office and Factory, LANCASTER, PA.

New York Office, 383 CANAL STREET.

Manufacturers of Caramels only.

TRY THE



AND YOU WILL INCREASE YOUR TRADE.

**SPECIALTIES:**

**UNWRAPPED GOODS:**

5 lbs. Unwrapped Caramels, assorted.  
196 Unwrapped Caramels, 2 for 1 cent.

168 Unwrapped Caramels, 2 for 1 cent.  
5-cent box (12) Unwrapped Caramels.

**CHOCOLATE-COVERED GOODS:**

5 lbs. Chocolate-covered Caramels, No. 1, Fine.  
5 lbs. Chocolate-covered Caramels, No. 2.  
200 Chocolate-covered Caramels, 2 for 1 cent.

5 lbs. Coconut-covered Caramels.  
200 Coconut-covered Caramels, 2 for 1 cent.  
5 lbs. Opera Nougat Caramels.



**Vanilla Eating Chocolates.**

**HERSHEY'S**

**Chocolate Wafers.**

**HERSHEY'S**

**Chocolate Nonpareils.**

**HERSHEY'S**

**Caracas Cocoa Powder.**

---

**THEY ARE ALL PERFECT.**

---

**HERSHEY CHOCOLATE CO.**

# Hershey's CHOCOLATE AND COCOA



THREE FRIENDS

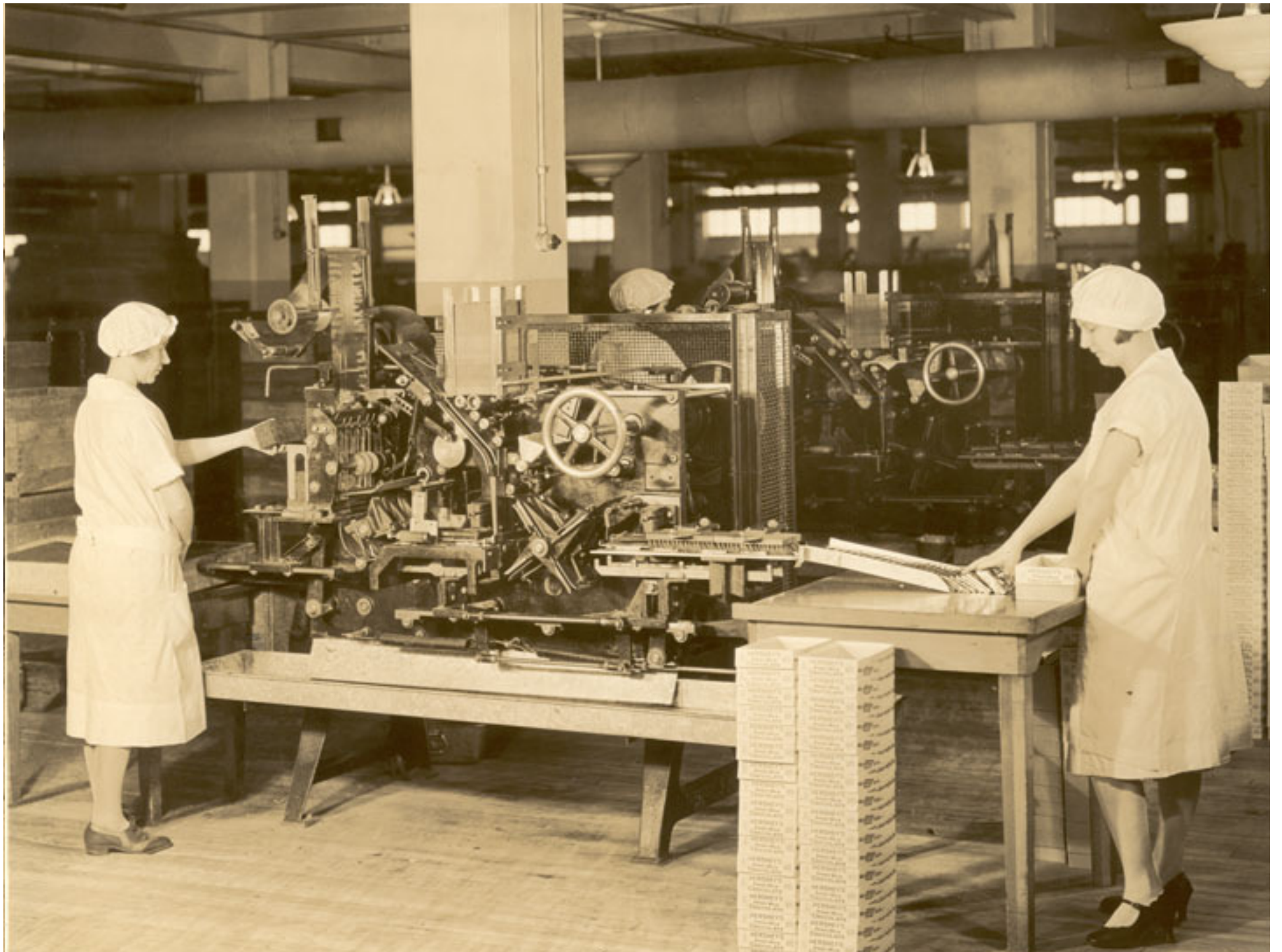




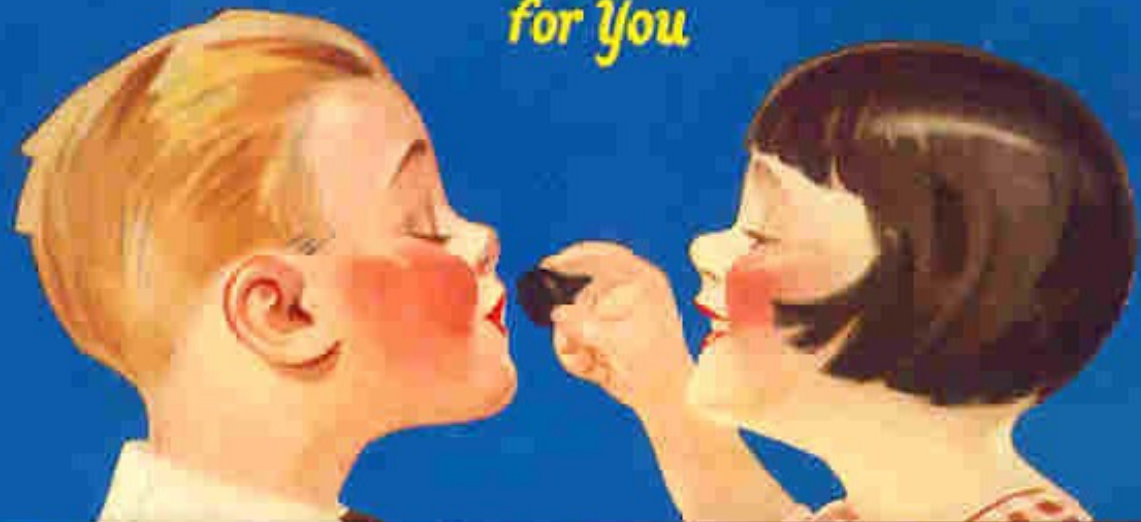
1107







*A Kiss  
for You*



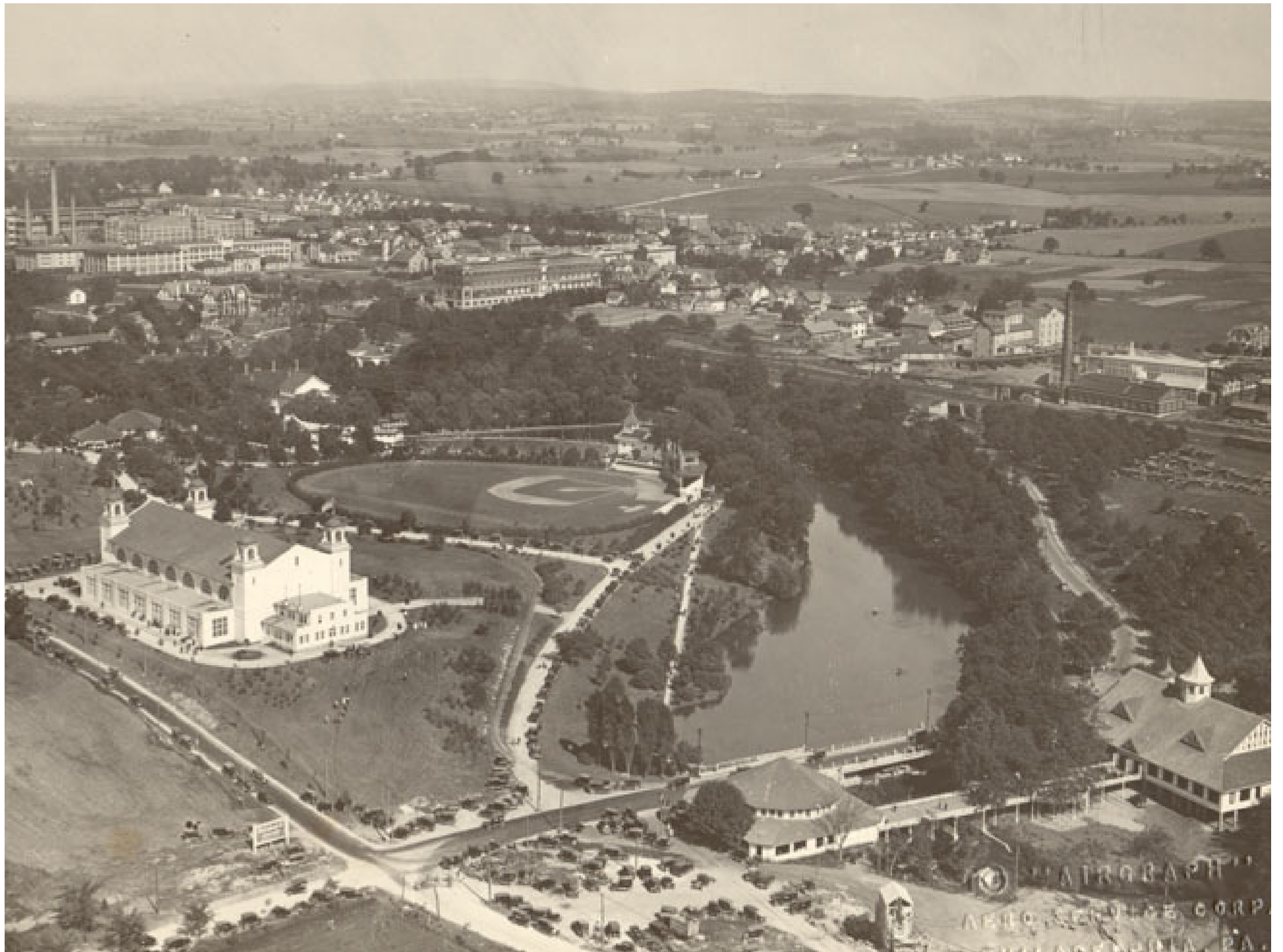
**HERSHEY'S** SWEET MILK CHOCOLATE **KISSES**



*Three Big  
Sellers*

*Printed in SILVER  
INK on distinctive  
HERSHEY MAROON labels.*



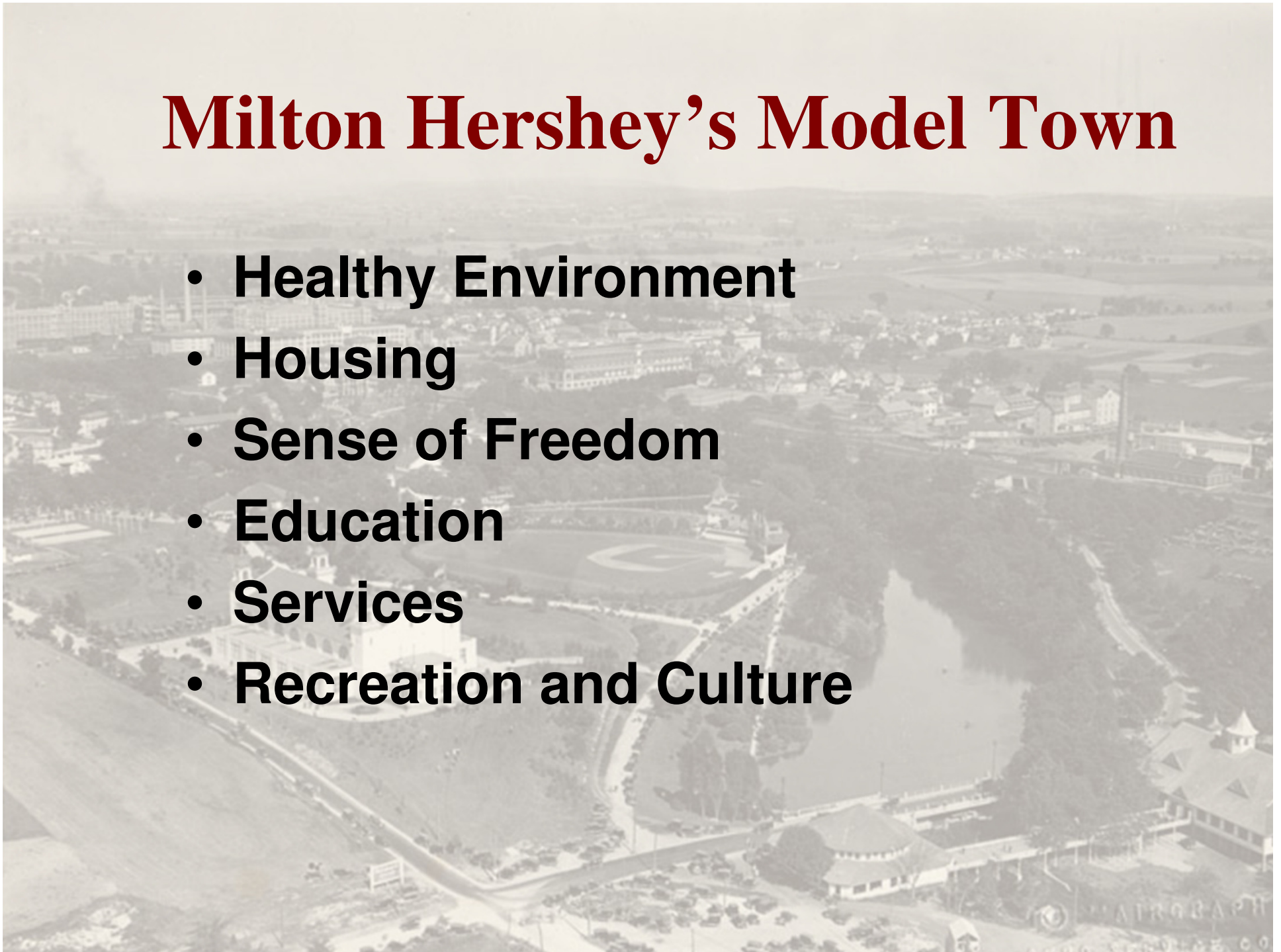


© 1935 MARLBOROUGH  
AMERICAN AIRLINES CORP.  
GREENSBORO, N.C.



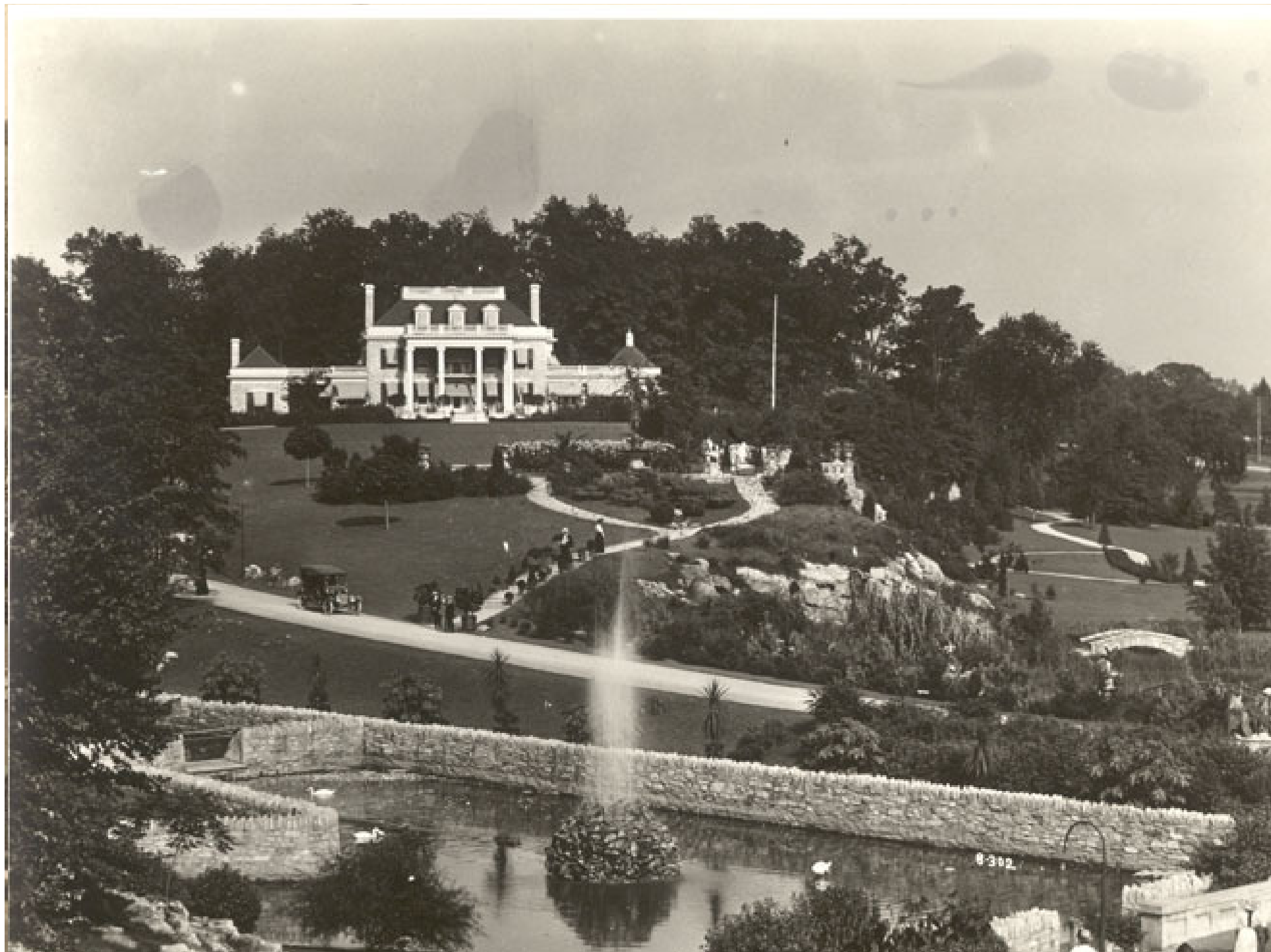
# Milton Hershey's Model Town

- **Healthy Environment**
- **Housing**
- **Sense of Freedom**
- **Education**
- **Services**
- **Recreation and Culture**















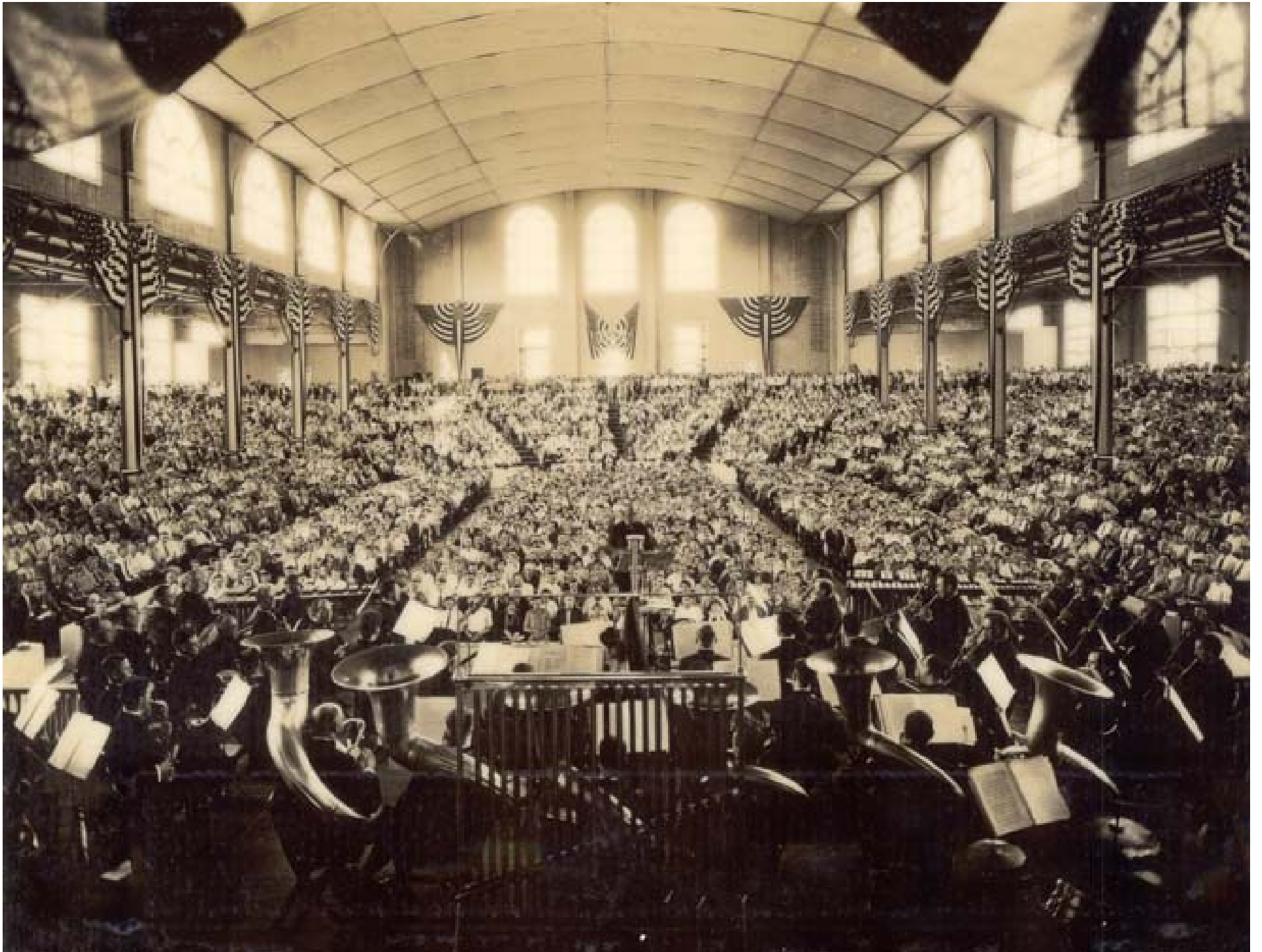
















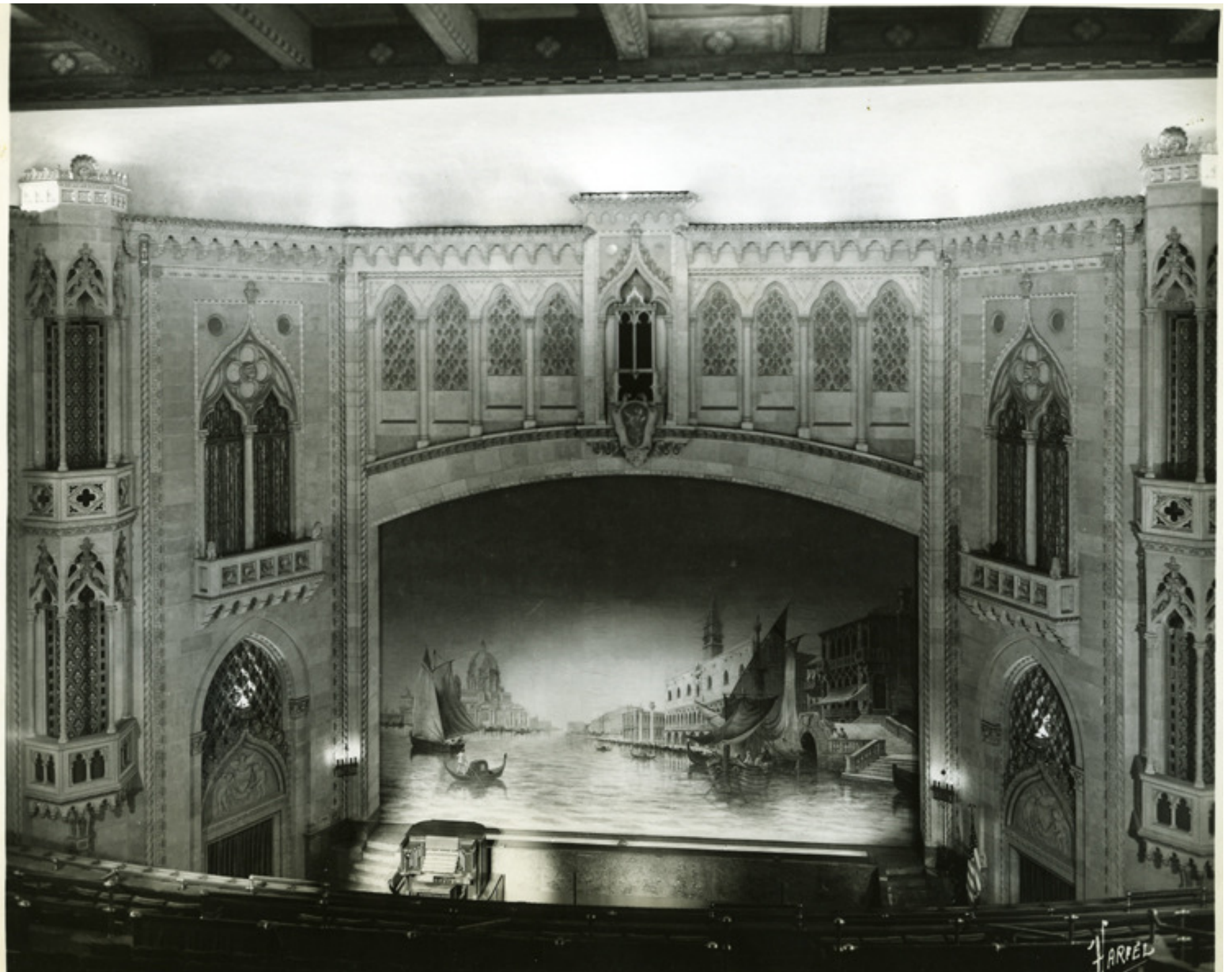


Highpoint Conservatory, Hershey, Pa.  
"Home of the Hershey Chocolate Co."









FARRÉL

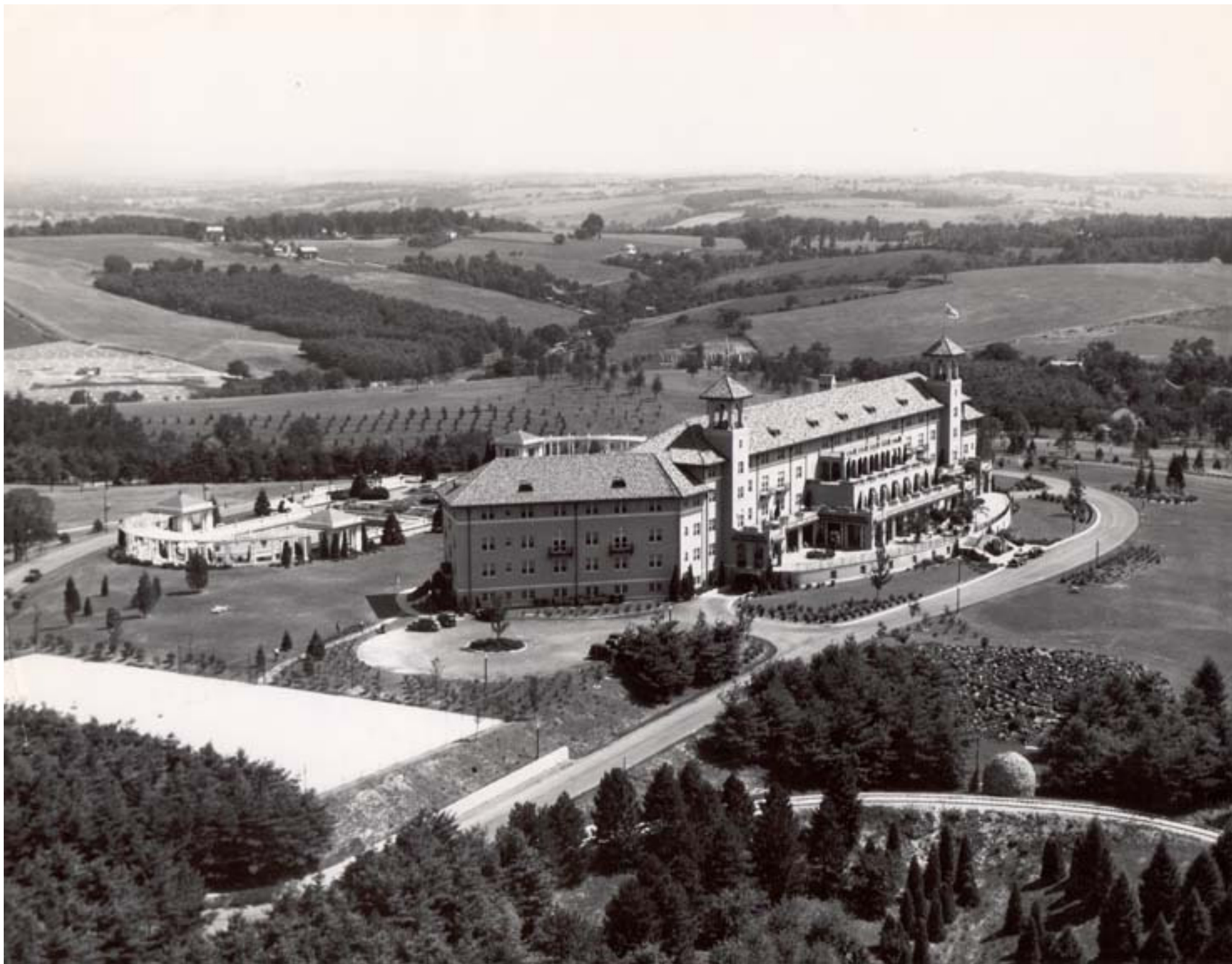






























# HERSHEY PARK



*The Summer Playground of Pennsylvania*

*Opens* **SUN. APR. 28**





**PA Governor Ed Martin, NY Governor Thomas Dewey and Milton Hershey, 5/31/1944**









THE HERSHEY INDUSTRIAL SCHOOL.













