



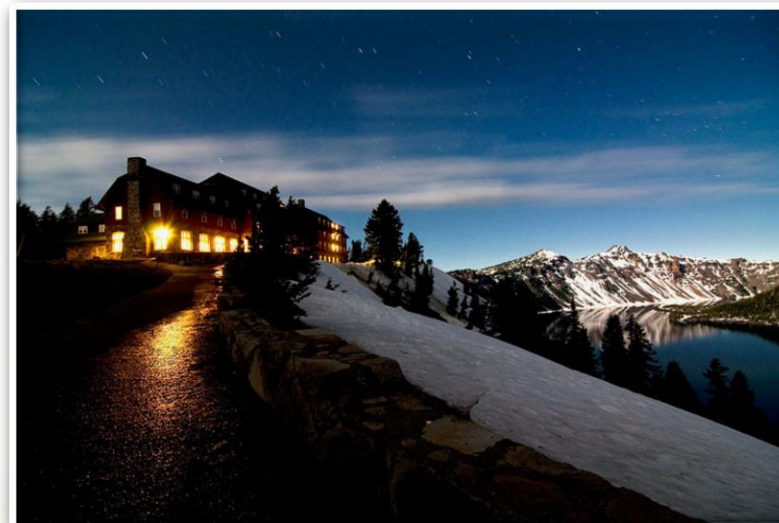
HISTORIC HOTELS of AMERICA

NATIONAL TRUST FOR HISTORIC PRESERVATION®

New Member Recognition Luncheon

Sponsored by

Coca-Cola



Amway Grand Plaza Hotel

Grand Rapids, Michigan

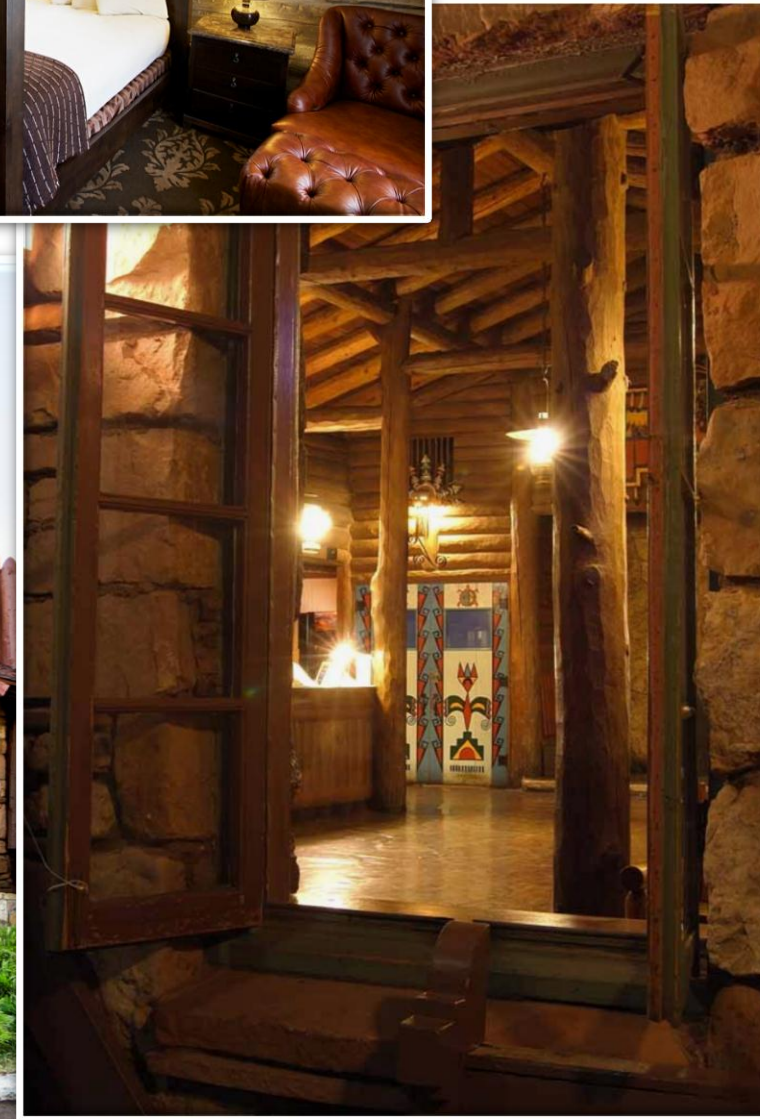
- ❖ Rooms: 682
- ❖ Historic Classification:
Original Hotel
- ❖ Décor Style: Traditional
- ❖ Architecture: Renaissance
Revival
- ❖ Built: 1913



Bright Angel Lodge & Cabins

Grand Canyon National Park, Arizona

- ❖ Rooms: 89
- ❖ Historic Classification:
Original Hotel
- ❖ Décor Style: Traditional
- ❖ Architecture: National Park
Service Rustic
- ❖ Built: 1935



Columbia Gorge Hotel

Hood River, Oregon

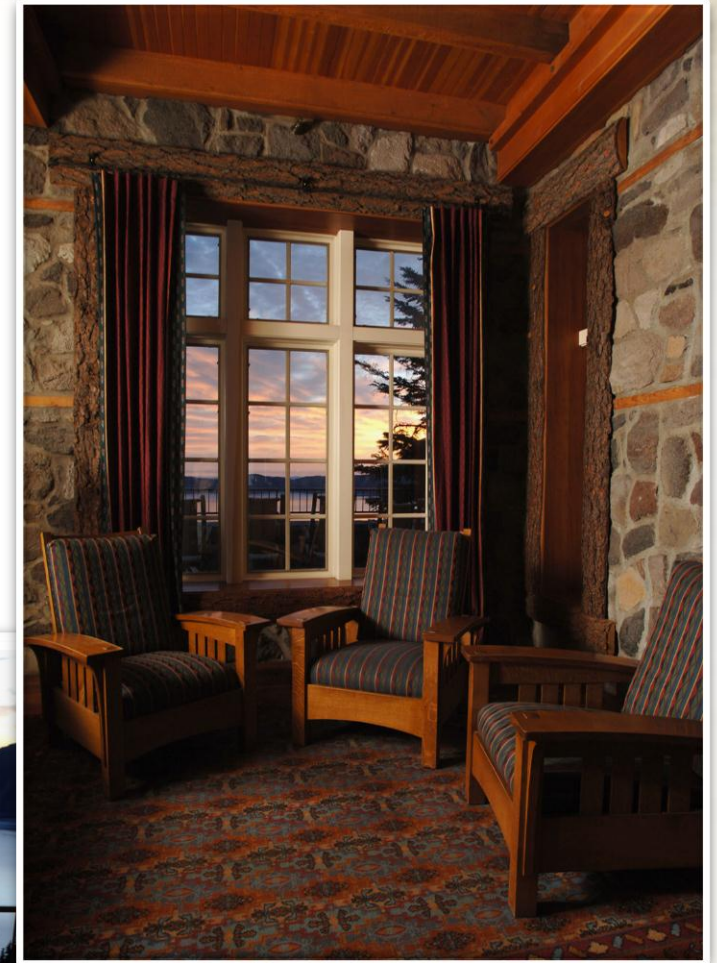
- ❖ Rooms: 39
- ❖ Historic Classification: Original Hotel
- ❖ Décor Style: Blended
- ❖ Architecture: Mission Spanish Revival
- ❖ Built: 1921
- ❖ Listed in National Register of Historic Places



Crater Lake Lodge

Crater Lake National Park , Oregon

- ❖ Rooms: 71
- ❖ Historic Classification: Original Hotel
- ❖ Décor Style: Traditional
- ❖ Architecture: National Park Service Rustic
- ❖ Built: 1915
- ❖ Listed in National Register of Historic Places



El Tovar Hotel

Grand Canyon National Park, Arizona

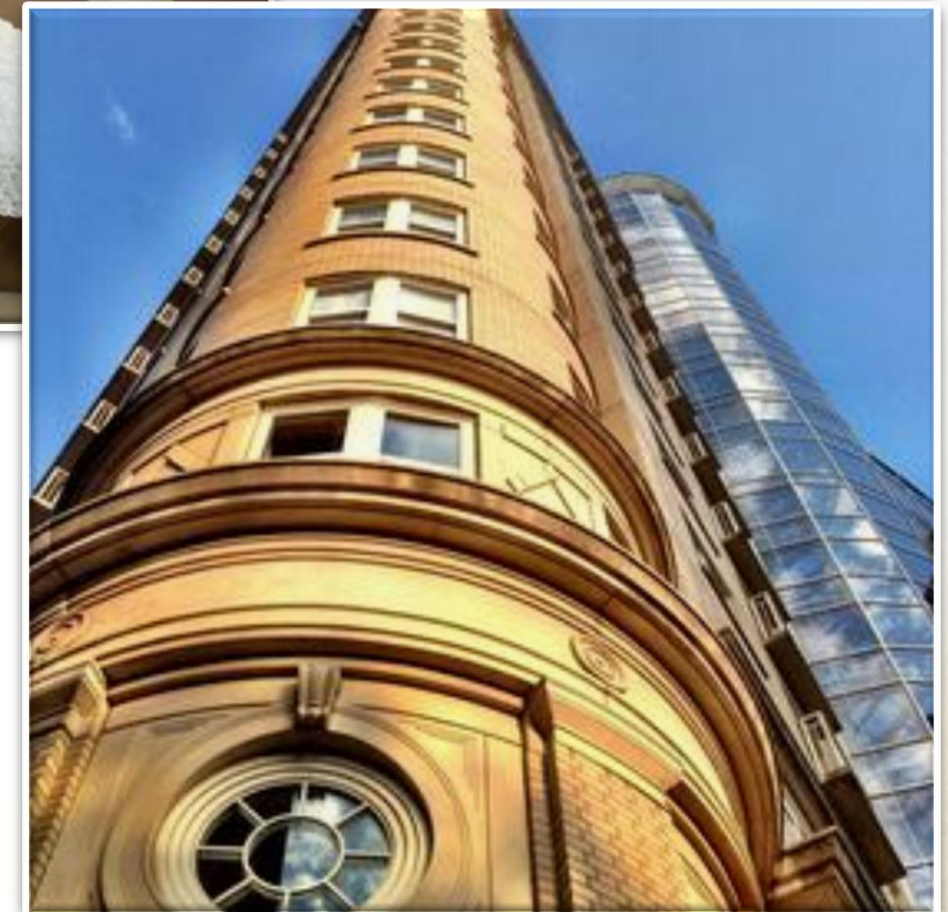
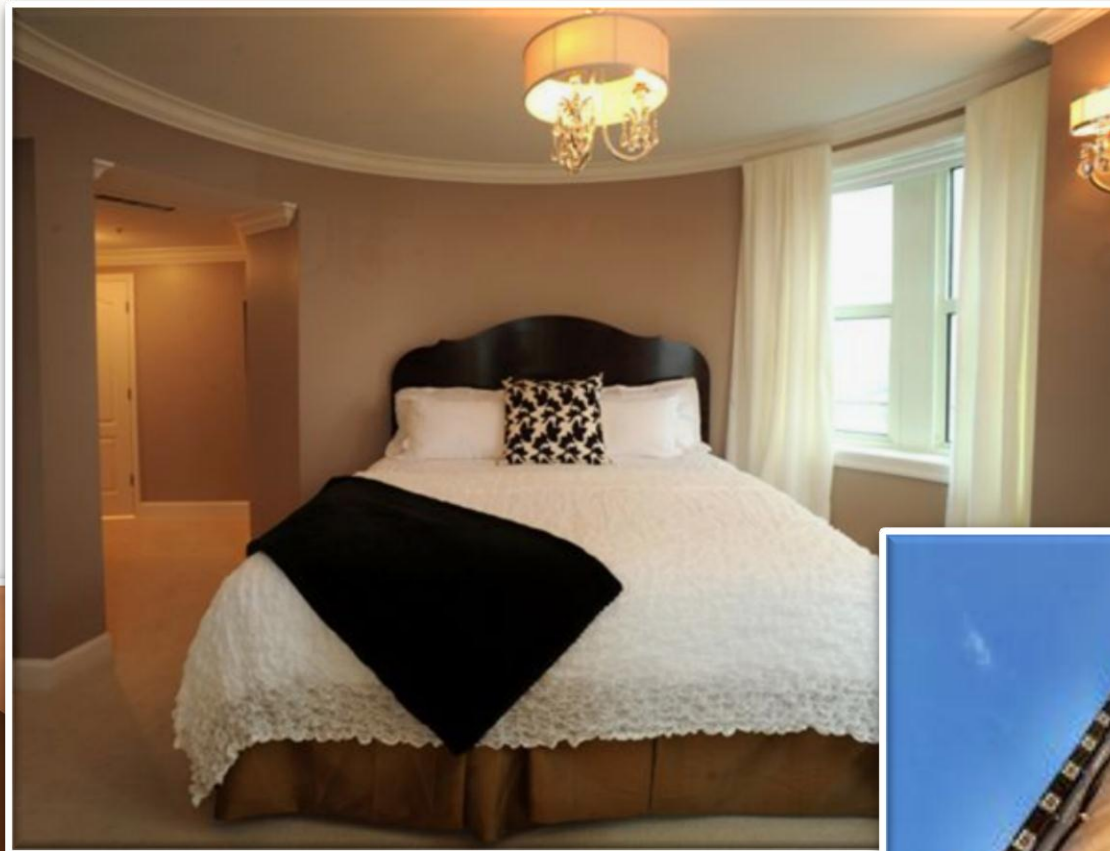
- ❖ Rooms: 78
- ❖ Historic Classification: Original Hotel
- ❖ Décor Style: Traditional
- ❖ Architecture: National Park Service Rustic
- ❖ Built: 1905
- ❖ Designated National Historic Landmark



Georgian Terrace

Atlanta, Georgia

- ❖ Rooms: 326
- ❖ Historic Classification:
Original Hotel
- ❖ Décor Style: Contemporary
- ❖ Architecture: Beaux Arts
- ❖ Built: 1911



Green Park Inn

Blowing Rock, North Carolina

- ❖ Rooms: 53
- ❖ Historic Classification: Original Hotel
- ❖ Décor Style: Traditional
- ❖ Architecture: Queen Anne
- ❖ Built: 1882
- ❖ Listed in National Register of Historic Places



Inn at 202 Dover

Easton, Maryland

- ❖ Rooms: 5
- ❖ Historic Classification: Historic Conversion
- ❖ Décor Style: Blended
- ❖ Architecture: Colonial Revival
- ❖ Built: 1874



The Inn at Furnace Creek

Death Valley National Park, California

- ❖ Rooms: 66
- ❖ Historic Classification: Original Hotel
- ❖ Décor Style: Blended
- ❖ Architecture: Mission Style
- ❖ Built: 1927
- ❖ Listed in National Register of Historic Places



Lake Yellowstone Hotel & Cabins

Yellowstone National Park, Wyoming

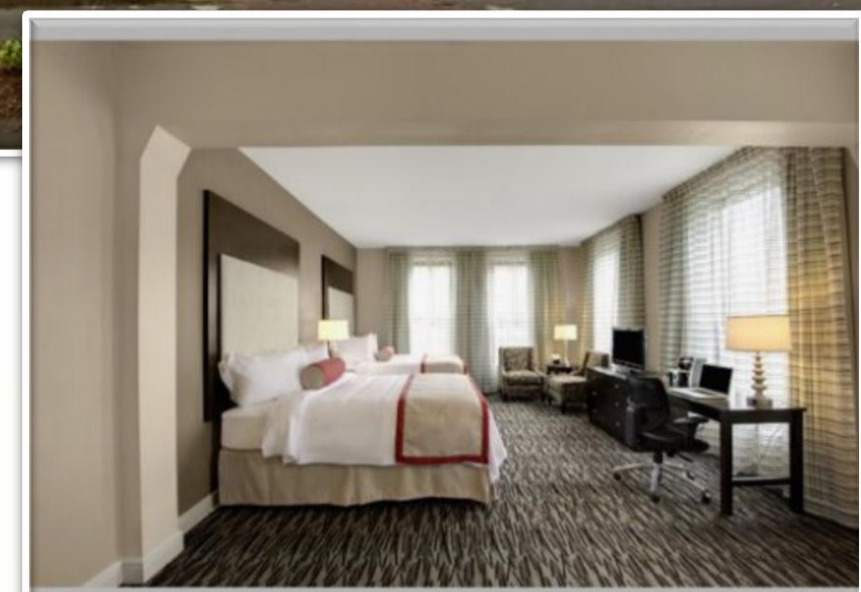
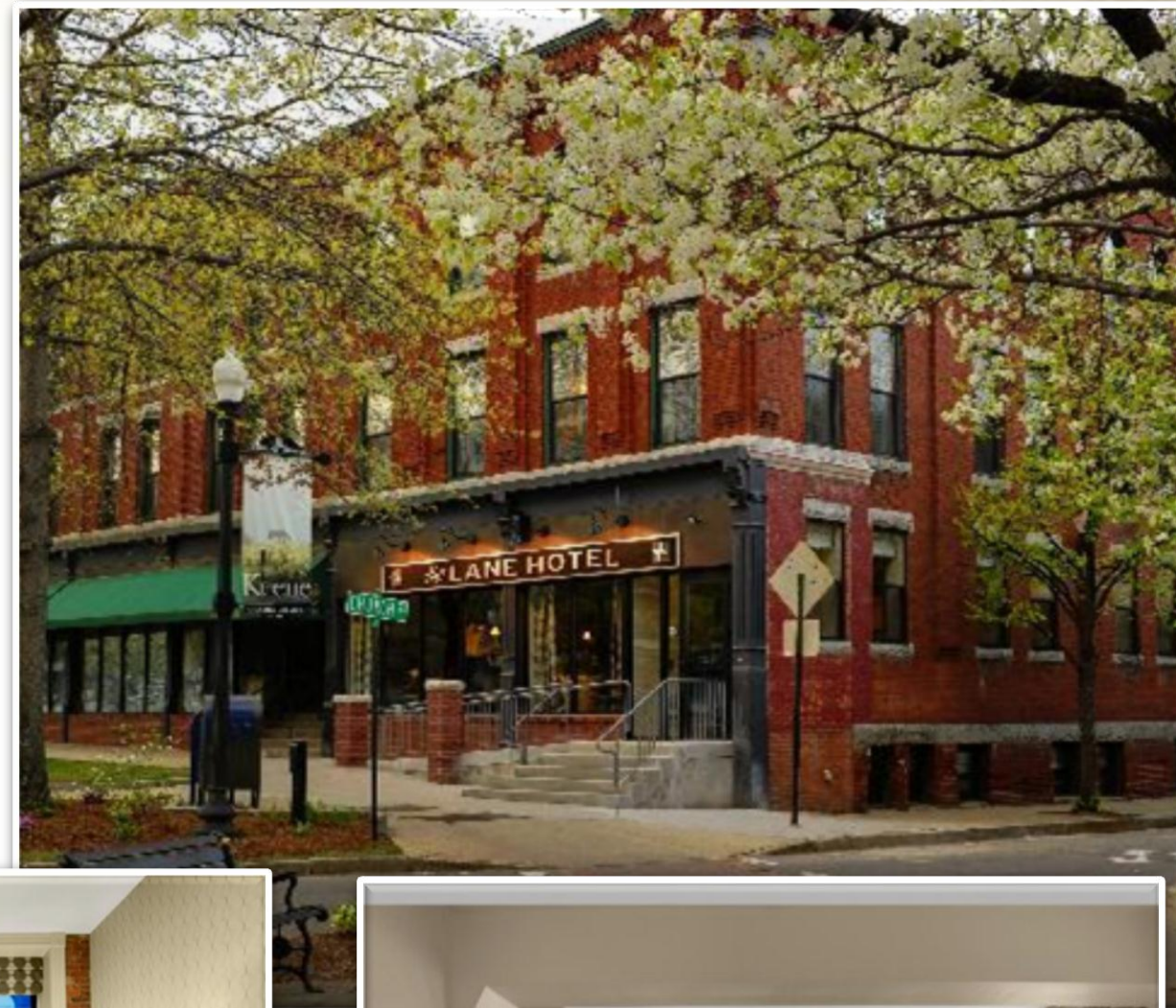
- ❖ Rooms: 304
- ❖ Historic Classification: Original Hotel
- ❖ Décor Style: Traditional
- ❖ Architecture: Colonial Revival
- ❖ Built: 1891
- ❖ Listed in National Register of Historic Places



The Lane Hotel

Keene, New Hampshire

- ❖ Rooms: 40
- ❖ Historic Classification:
Historic Conversion
- ❖ Décor Style: Contemporary
- ❖ Architecture: Colonial
Revival
- ❖ Built: 1891



The Inn at
Furnace Creek

Lake
Yellowstone

The Lane Hotel

Mast Farm Inn

The Montvale
Hotel

The Mulberry
Inn

Mast Farm Inn

Valle Crucis, North Carolina

- ❖ Rooms: 15
- ❖ Historic Classification: Historic Conversion
- ❖ Décor Style: Traditional
- ❖ Architecture: Bungalow
- ❖ Built: 1880s
- ❖ Listed in National Register of Historic Places



The Montvale Hotel

Spokane, Washington

- ❖ Rooms: 36
- ❖ Historic Classification: Historic Conversion
- ❖ Décor Style: Blended
- ❖ Architecture: Early Commercial
- ❖ Built: 1899
- ❖ Listed in National Register of Historic Places



The Lane Hotel

Lake Yellowstone

Mast Farm Inn

▼
The Montvale
Hotel

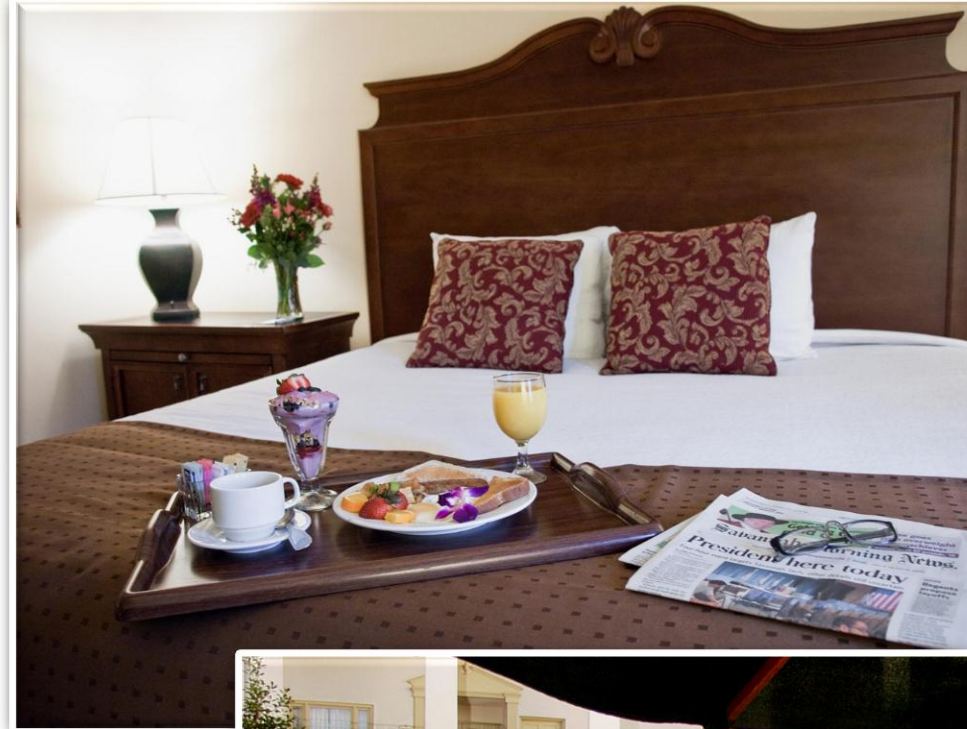
The Mulberry Inn

Nottoway
Plantation

The Mulberry Inn

Savannah, Georgia

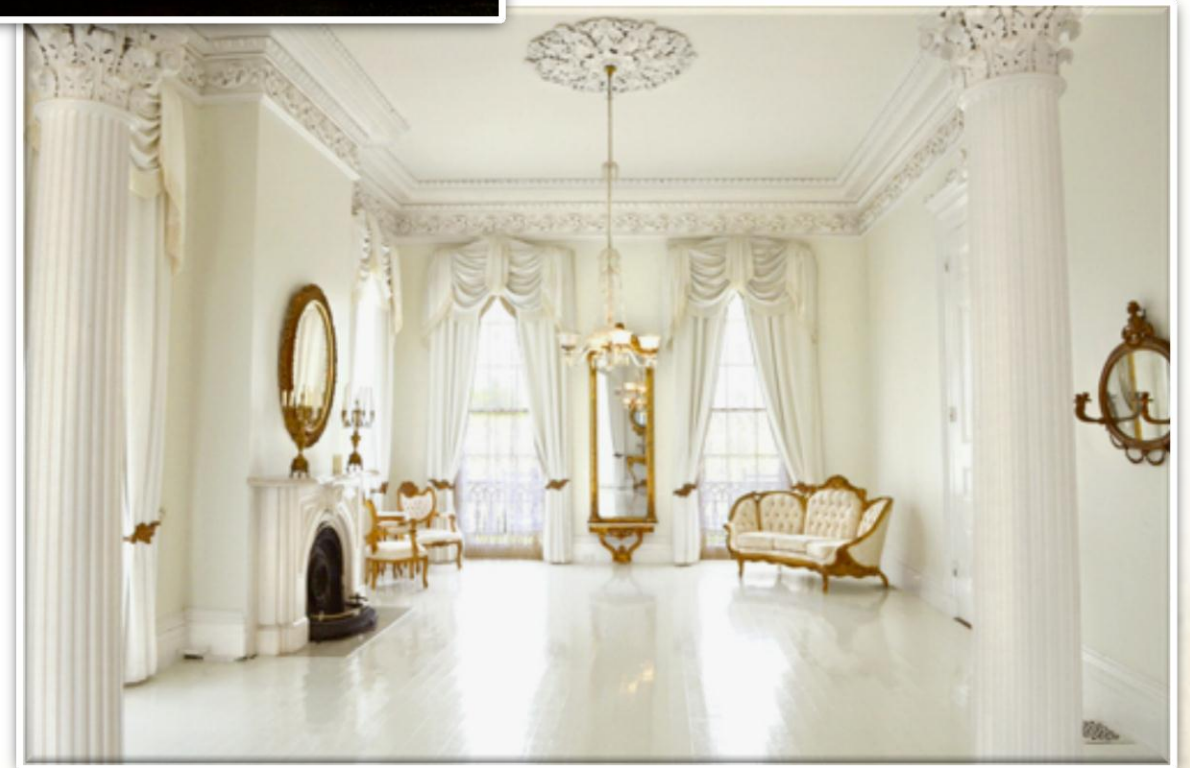
- ❖ Rooms: 145
- ❖ Historic Classification:
Historic Conversion
- ❖ Décor Style: Traditional
- ❖ Architecture: Eclectic
- ❖ Built: 1860



Nottoway Plantation

White Castle, Louisiana

- ❖ Rooms: 40
- ❖ Historic Classification: Historic Conversion
- ❖ Décor Style: Traditional
- ❖ Architecture: Antebellum
- ❖ Built: 1859
- ❖ Listed in National Register of Historic Places



Old Faithful Inn

Yellowstone National Park, Wyoming

- ❖ Rooms: 329
- ❖ Historic Classification: Original Hotel
- ❖ Décor Style: Traditional
- ❖ Architecture: National Park Service Rustic
- ❖ Built: 1904
- ❖ Designated National Historic Landmark



Phantom Ranch

Grand Canyon National Park, Arizona

- ❖ Rooms: 49
- ❖ Historic Classification: Original Hotel
- ❖ Décor Style: Traditional
- ❖ Architecture: National Park Service Rustic
- ❖ Built: 1922
- ❖ Listed in National Register of Historic Places



Old Faithful Inn

Phantom Ranch

Pierpont Inn

Sacajawea
Hotel

Safety Harbor
Resort & Spa

Zion Lodge

Pierpont Inn

Ventura, California

- ❖ Rooms: 77
- ❖ Historic Classification:
Original Resort
- ❖ Décor Style: Blended
- ❖ Architecture: Eclectic
- ❖ Built: 1910



Sacajawea Hotel

Three Forks, Montana

- ❖ Rooms: 29
- ❖ Historic Classification: Original Hotel
- ❖ Décor Style: Blended
- ❖ Architecture: Colonial Revival
- ❖ Built: 1910
- ❖ Listed in National Register of Historic Places



Phantom
Ranch

Pierpont Inn

▼
Sacajawea Hotel

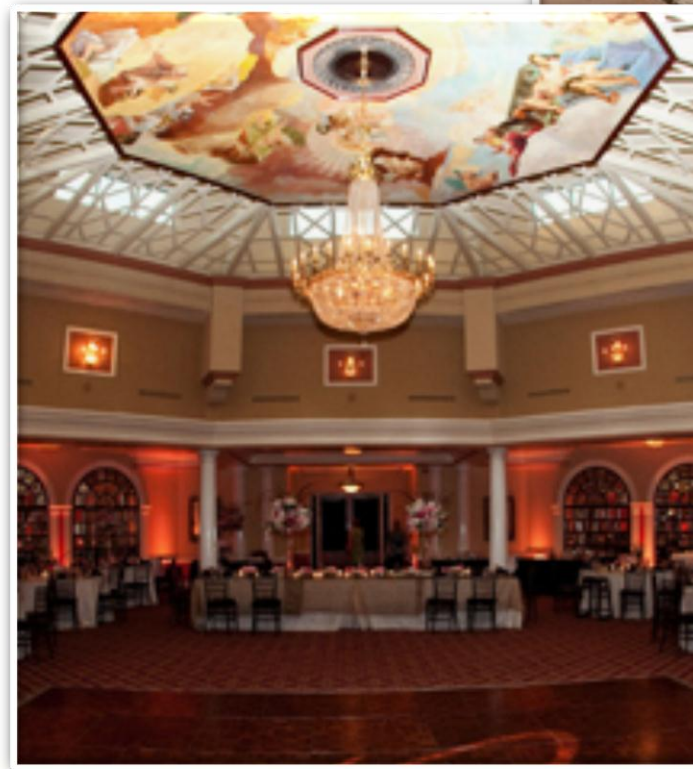
Safety Harbor
Resort & Spa

Zion Lodge

Safety Harbor Resort & Spa

Safety Harbor, Florida

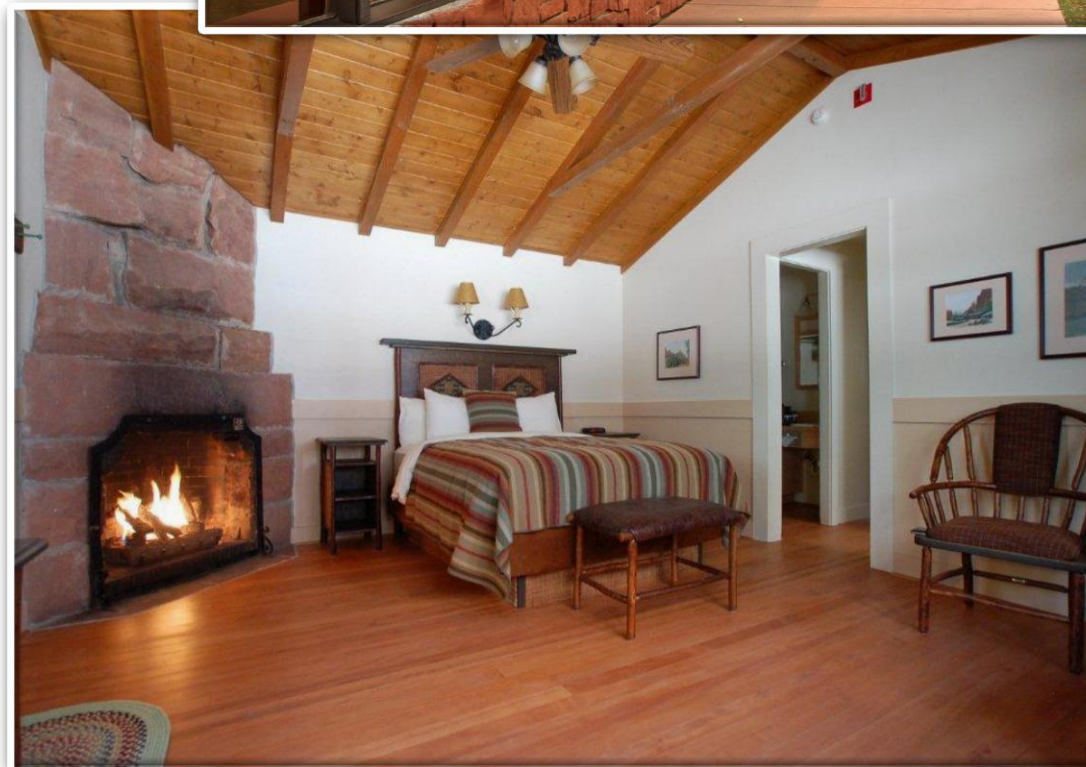
- ❖ Rooms: 174
- ❖ Historic Classification:
Historic Conversion
- ❖ Décor Style: Contemporary
- ❖ Architecture: Eclectic
- ❖ Built: 1925



Zion Lodge

Zion National Park, Utah

- ❖ Rooms: 121
- ❖ Historic Classification: Original Hotel
- ❖ Décor Style: Traditional
- ❖ Architecture: National Park Service Rustic
- ❖ Built: 1923
- ❖ Listed in National Register of Historic Places



Phantom Ranch

Pierpont Inn

Sacajawea Hotel

Safety Harbor
Resort & Spa

▼
Zion Lodge



HISTORIC HOTELS of AMERICA

NATIONAL TRUST FOR HISTORIC PRESERVATION®

*Ranging in age from
77 To 152*

**We Welcome
the
Class of 2012**

