



DISCOVER  
NORTH CAROLINA

# Wines

[www.visitncwine.com](http://www.visitncwine.com)

NC WINE & GRAPE COUNCIL  
NC DEPARTMENT OF COMMERCE  
NC DIVISION OF TOURISM, FILM,  
& SPORTS DEVELOPMENT  
4324 MAIL SERVICE CENTER  
RALEIGH, NC 27699-4324

2006  
GUIDE &  
MAP TO  
NORTH  
CAROLINA  
WINERIES



DISCOVER  
NORTH CAROLINA

# Wines

# NORTH CAROLINA

## Wines of Today

THE FIRST COMMERCIAL WINERY ESTABLISHED  
IN NORTH CAROLINA, MEDOC VINEYARD, LED  
THE COUNTRY'S WINE PRODUCTION IN 1835.  
AFTER MORE THAN A CENTURY, NORTH CAROLINA  
IS REBUILDING ITS GRAPE INDUSTRY AND CREATING  
PROMISING FUTURES FOR ITS FARMERS AND CITIZENS.  
TODAY, NORTH CAROLINA IS HOME TO 50 WINERIES  
AND 3 VINEYARD-LOCATED TASTING ROOMS.

### DIVERSITY. UNIQUENESS. BEAUTY.

Growers in the Mountains and Piedmont have  
planted traditional European grape varieties,  
called *Vitis vinifera*, and French-American  
Hybrids. Commonly planted varieties include  
Cabernet Sauvignon, Cabernet Franc, Merlot,  
Pinot Noir, Syrah, Chambourcin, Chardonnay,  
Viognier, Sauvignon Blanc, Riesling, Seyval  
Blanc and Vidal Blanc.

Plantings of native Muscadine grapes,  
often called Scuppernongs, are also on the  
rise due to demand for fresh grapes and  
Muscadine wines. These grapes are relatively  
pest resistant and thrive in the hot sandy  
conditions of the Coastal Plain. Muscadines  
contain high levels of Resveratrol and other  
health-enhancing antioxidants.

*When you visit a local winery, you  
will share in the enthusiasm that  
our wineries and vineyards continue to  
generate. Please request North Carolina  
wines at your favorite shops and  
restaurants, and discover what  
you've been missing!*

To make the most of your winery visit:

- Call ahead to confirm hours and tour times
- Designate a driver
- Check our website for new  
winery openings at:

[www.visitncwine.com](http://www.visitncwine.com)

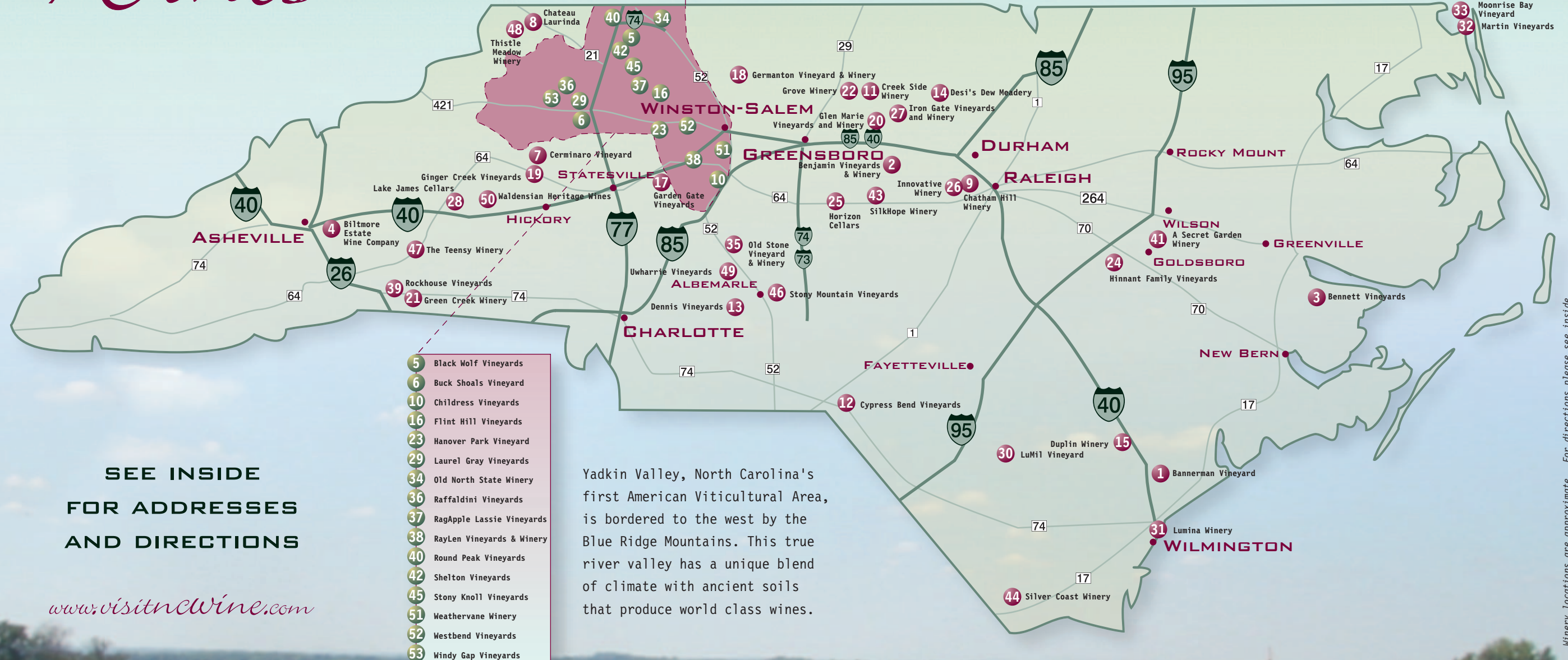


LET OUR HIGHWAY DIRECTIONAL SIGNS  
HELP YOU FIND NC WINERIES



# Wines

*Yadkin Valley Appellation*  
see legend

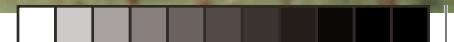


SEE INSIDE  
FOR ADDRESSES  
AND DIRECTIONS

[www.visitncwine.com](http://www.visitncwine.com)

Yadkin Valley, North Carolina's first American Viticultural Area, is bordered to the west by the Blue Ridge Mountains. This true river valley has a unique blend of climate with ancient soils that produce world class wines.

Winery locations are approximate. For directions please see inside.





# DISCOVER NORTH CAROLINA Wines

## 1 BANNERMAN VINEYARD

2624 Stag Park Rd, Burgaw, NC 28425  
910-259-5474, Fax 910-259-5553  
E-mail: [Cbannerman@bellsouth.net](mailto:Cbannerman@bellsouth.net)  
Hours: Wed-Sat 12-4pm  
Location: Pender County – Take Exit 398 off I-40, Turn West on NC Hwy 53. Go approx 1 mi and turn left on Stag Park Rd. Vineyard is 2.5 mi on right.

## 2 BENJAMIN VINEYARDS & WINERY

6516 Whitney Rd, Graham NC 27253  
336-376-1080, Fax same  
Web: [www.benjaminvineyards.com](http://www.benjaminvineyards.com)  
Hours: Thu-Sun Noon-5pm  
Location: Alamance County – From I-85, take exit 154 (Mebane Oaks Rd) south for 8.5 mi. Cross Hwy 54 (becomes Saxapahaw-Oaks Rd). Go 4 mi. Just over the Haw River bridge, turn left on Whitney Rd. Vineyard is 1.2 mi on left.

## 3 BENNETT VINEYARDS

6832 Old Sandhill Rd, Edward, NC 27821  
1-877-762-9463, Fax 252-322-7154  
Hours: Mon-Sat 9:00am-5:30pm; Sun 1-5pm  
Web: [www.ncwines.com](http://www.ncwines.com)  
Location: Beaufort County – 35 mi east of Greenville, off Hwy 33. Follow signs.

## 4 BILTMORE ESTATE WINE COMPANY

One North Pack Square, Asheville, NC 28801  
1-800-543-2961, 828-225-6280  
Web: [www.biltmore.com](http://www.biltmore.com)  
Hours: Mon-Sat, 11am-7pm; Sun Noon-7pm  
Location: Buncombe County – On the grounds of Biltmore Estate in Asheville. Take I-40 exit 50A and go North on Hwy 25 two blocks to Biltmore House entrance.

## 5 BLACK WOLF VINEYARDS

283 Vineyard Lane, Dobson, NC 27017  
336-374-2532, Fax 336-374-3496  
Web: [www.blackwolfvineyards.com](http://www.blackwolfvineyards.com)  
Hours: Mon-Sat 11am-2:30pm; Thu-Sat 5-10pm; Sun Noon-8pm  
Location: Surry County – From I-77 take Exit 93 (Zepher Rd) into Dobson to the second traffic light (Main St). Go right on Main St one block to the traffic light and turn left onto E Atkins St. Cross over Hwy 601 and take the ramp (601 N) and continue on to Vineyard Ln on your right.

## 6 BUCK SHOALS VINEYARD

6137 Vintner Way, Hamptonville, NC 27020  
336-468-9274, Fax 336-924-2720  
Web: [www.buckshoalsvineyard.com](http://www.buckshoalsvineyard.com)  
Hours: Wed-Thu 11am-5pm (Closed Jan-Feb); Fri-Sat 11am-6pm  
Location: Yadkin County – Take Hwy 421 to exit 267 Windsor Rd – follow 2.6 mi. to vineyard on right.

## 7 CERMINARO VINEYARD

4399 Wilkesboro Blvd, Boomer, NC 28606  
828-754-9306, Fax same  
Web: [www.cerminarovineyard.com](http://www.cerminarovineyard.com)  
Hours: Sat Noon-6pm; Sun-Fri by appt  
Location: Caldwell County – In Kings Creek on Hwy 18 between Lenoir and Wilkesboro.

## 8 CHATEAU LAURINDA

690 Reeves Ridge Rd, Sparta, NC 28675  
1-800-650-3236, Fax 336-372-5529  
Web: [www.chateaulaurindawinery.com](http://www.chateaulaurindawinery.com)  
Hours: Tue-Sat 10am-7pm; Sun Noon-5pm  
Location: Alleghany County – From I-77, take exit 83 to Hwy 21 towards Sparta. Follow Hwy 21 through Sparta to 221 S. Turn right on Hwy 93. Go 1.5 mi to 2nd road on left. Winery is at end of paved road on right.

## 9 CHATHAM HILL WINERY

3500 Gateway Centre Blvd. #200  
Morrisville, NC 27560  
1-800-808-6768, 919-380-7135, Fax 919-380-1310  
Web: [www.chathamhillwine.com](http://www.chathamhillwine.com)  
Hours: Mon-Fri 11am-5pm; Sat 11am-6pm; Sun 1-5pm  
Location: Wake County – From I-40 take exit 285 (Aviation Parkway). Go south to Morrisville. Take first right at Gateway Centre. Go .3 mi and turn right onto Northgate Ct.

## 10 CHILDRESS VINEYARDS

1000 Childress Vineyards Rd, Lexington, NC 27295  
336-236-9463, Fax 336-236-9464  
Web: [www.childressvineyards.com](http://www.childressvineyards.com)  
Hours: Mon-Sat 10am-6pm; Sun Noon-6pm  
Location: Davidson County – Take Hwy 52 S to Lexington to Exit 89. Take Hwy 64 W about 500 feet to winery entrance is on the right.

## 11 CREEK SIDE WINERY

3515 Stoney Crk. Ch. Rd, Elon, NC 27244  
336-584-4117, Fax 336-586-0975  
Web: [www.creeksidewinery.com](http://www.creeksidewinery.com)  
Hours: Mon/Thu/Fri/Sat Noon-6pm; Sun 1-6pm (open to 5:30pm Nov-Mar) and by appt  
Location: Alamance County – From Greensboro take I-40 exit 141. Go through the town of Elon on Williamson Ave (changes to Shallowford Rd) until you intersect with Hwy 87. Take left onto Hwy 87 N, go approx 7 mi. Turn right on Stoney Creek Ch. Rd. Winery 1.3 mi on left.

## 12 CYPRESS BEND VINEYARDS

21904 Riverton Rd, Wagram, NC 28396  
910-369-0411, Fax 910-369-0484  
Web: [www.cypressbendvineyards.com](http://www.cypressbendvineyards.com)  
Hours: Wed/Thu/Fri/Sun 12 to 6pm; Sat 10am-6pm; Mon-Tue by appt  
Location: Scotland County – From Laurinburg take Hwy 401 N to Wagram and turn right onto Riverton Rd. Go approx 3 mi to the winery on your left.

## 13 DENNIS VINEYARDS

24043 Endy Rd, Albemarle, NC 28001  
1-800-230-1743, 704-982-6090, Fax 704-986-6128  
Web: [www.dennisvineyards.com](http://www.dennisvineyards.com)  
Hours: Mon-Sat 10am-6pm; Sun Seasonal hours, call ahead  
Location: Stanly County – From Albemarle take Hwy 24-27 W. Go approx 5 mi. At caution light, Endy Rd, turn right. Winery is .5 mile on left.

## 14 DESI'S DEW MEADERY

8902 Charlotte's Mtn. Rd, Rougemont, NC 27572  
919-632-4770  
Web: [www.desidew.com](http://www.desidew.com)  
Hours: by appt only  
Location: Orange County – From I-85, take Exit 175 (Guess Rd). Head north approx 10 mi. Go right on New Sharon Ch Rd 1.5 mi and turn right on Charlotte's Mtn. Rd for ¼ mi.

## 15 DUPLIN WINERY

P.O. Box 756, Rose Hill, NC 28458  
1-800-774-9634, 910-289-3888, Fax 910-289-3094  
Web: [www.duplinwinery.com](http://www.duplinwinery.com)  
Hours: Mon-Sat 9am-5pm  
Location: Duplin County – Take I-40 exit 380. Turn right on Hwy 117 and go 6 blocks. Winery is on left.

## 16 FLINT HILL VINEYARDS\*

2133 Flint Hill Rd, East Bend, NC 27018  
336-699-4455, Fax 336-961-2501  
Web: [www.flinthillvineyards.com](http://www.flinthillvineyards.com)  
Hours: Fri 11am-6pm; Sat 11am-5pm; Sun 1-5pm  
Location: Yadkin County – From US Hwy 421 take Baltimore Rd exit. Left at top of ramp. At blinking light intersection turn right onto Yadkinville Rd (Old US Hwy 421). Go approx 5 mi, and take left on Flint Hill Rd. Vineyard is 2 mi on the left.

## 17 GARDEN GATE VINEYARDS

261 Scenic Drive, Mocksville, NC 27028  
336-751-3794 or 336-941-7721, Fax 336-751-3794  
Web: [www.gardengatevineyards.com](http://www.gardengatevineyards.com)  
Hours: Wed-Sat Noon-5pm; other hours by appt.  
Location: Davie County – From Winston-Salem, take I-40 W to Exit 168 onto Hwy 64 towards Mocksville. Go .2 mi, take a right on Green Hill Rd. Go 1.5 mi and take a left on County Home Rd. Go .6 mi turn right on Scenic Drive. Winery is on the right.

## 18 GERMANTON VINEYARD & WINERY

3530 Hwy 8-65, Germanton, NC 27019  
336-969-2075, Fax 336-969-6559  
Web: [www.germantongallery.com](http://www.germantongallery.com)  
Hours: Tue-Fri 10am-6pm; Sat 9am-5pm; call for Sunday hours  
Location: Stokes County – In Germanton Gallery on corner of Hwy 8 and Friendship Rd. (8 mi north of Winston-Salem).

## 19 GINGER CREEK VINEYARDS

858 John Cline Rd, Taylorsville, NC 28681  
828-312-4362 or 828-312-4359, Fax 704-658-0868  
E-mail: [dwaustin1952@hotmail.com](mailto:dwaustin1952@hotmail.com)  
Hours: by appt only  
Location: Alexander County – From I-40 W, take exit 125 and turn north on Lenoir-Rhine Blvd. Take Hwy 127 to Antioch Ch. Rd, left on Antioch Ch. Rd to Caldwell Pond Rd, right on Caldwell Pond then left on John Cline Rd. At end of road turn left, at fork bear right, 2nd fork bear right, vineyard on left.

## 20 GLEN MARIE VINEYARDS AND WINERY

1838 Johnson Rd, Burlington, NC 27217  
336-578-3938  
Web: [www.glenmariewinery.com](http://www.glenmariewinery.com)  
Hours: Thu-Sun Noon-6pm  
Location: Alamance County – From Greensboro, take I-40/85 E to exit 150 and turn left. At the 4th light take a right onto Bason Rd. Follow Bason Rd to Mebane Rogers Rd and turn left. Go over the lake and take a right on Johnson Rd. The tasting room is on the left.

## 21 GREEN CREEK WINERY

413 Gilbert Rd, Columbus, NC 28722  
828-863-2182, Fax 828-863-2183  
Web: [www.greencreekwinery.com](http://www.greencreekwinery.com)  
Hours: Thu-Sun 1-5pm  
Location: Polk County – US Hwy 74 to Exit 167. Go south 3 mi on Hwy 9. Right on Landrum Rd for 1 mi. Right on Gilbert Rd.

## 22 GROVE WINERY

7360 Brooks Bridge Rd, Osceola, NC 27249  
336-584-4060  
Web: [www.grovewinery.com](http://www.grovewinery.com)  
Hours: Fri-Sat Noon-5pm; Sun 1pm-5pm  
Location: Guilford County – From Greensboro take Route 29 N to Brown Summit exit. Go east 7.6 mi (through Monticello, stay straight on Osceola-Ossipee Rd where Hwy 150 turns). Take a left on Brooks Bridge Rd, winery is on right.

## 23 HANOVER PARK VINEYARD

1927 Courtney-Huntsville Rd, Yadkinville, NC 27055  
336-463-2875, Fax same  
Web: [www.hanoverparkwines.com](http://www.hanoverparkwines.com)  
Hours: Thu-Sat Noon-6pm; Sun 1-5pm  
Location: Yadkin County – From I-40, take exit 170 for Hwy 601. Go north 9.8 mi and turn right onto Courtney-Huntsville Rd. Vineyard is 1 mi on left.

## 24 HINNANT FAMILY VINEYARDS

826 Pine Level-Micro Rd, Pine Level, NC 27568  
919-965-3350, Fax 919-965-6103  
Web: [www.hinnantvineyards.com](http://www.hinnantvineyards.com)  
Hours: Tue-Fri 11am-5pm; Sat 10am-6pm; Sun 1-5pm  
Location: Johnston County – From Raleigh, take I-40E to exit 306 for Hwy 70 E towards Smithfield. Once you pass over Smithfield towards Goldsboro, make left at 2nd spotlight onto Peedin Ave., then 2.5 mi on right.

## 25 HORIZON CELLARS

466 Vineyard Ridge, Siler City, NC 27344  
919-742-1404, Fax 919-742-3885  
Web: [www.horizoncellars.com](http://www.horizoncellars.com)  
Hours: Mon/Thu/Fri 11am-5pm; Sat 11am-6pm; Sun Noon-6pm  
Location: Chatham County – From Siler City, take Hwy 421 S 2 mi. Take Exit 168 (S Chatham Ext.) and turn right. Go 1 mi to Old Hwy 421 and turn left. Go ½ mi and turn right onto Vineyard Ridge. Cross over railroad tracks and the one lane bridge. Follow Vineyard Ridge (gravel road) as it veers left about ½ mi. At the top of the ridge, turn right through our gate.

## 26 INNOVATIVE WINERY

10235 Chapel Hill Rd, #400 Hwy 54  
Morrisville, NC 27560  
919-469-3500, Fax 919-469-4528  
Web: [www.innovativewinery.com](http://www.innovativewinery.com)  
Hours: Tue-Fri Noon-7pm; Sat Noon-5pm  
Location: Wake County From I-40 take exit 285. Go south on Aviation Parkway to Hwy 54 (2 mi), take right on Hwy 54 W and go ½ mi. Winery is on left in Morrisville Station.

## 27 IRON GATE VINEYARDS AND WINERY

2540 Lynch Store Rd, Mebane, NC 27302  
919-304-WINE, Fax 919-304-6424  
Web: [www.irongatevineyards.com](http://www.irongatevineyards.com)  
Hours: Mon-Fri 1-7pm; Sat 10am-6pm; Sun 1-6pm  
Location: Alamance County – From I-40/I-85 take Exit 153 (Hwy 119 N) go through Mebane, 1-1/2 mi past Mill Creek Golf Course, turn right on Lynch Store Rd. 3rd driveway on left.

## 28 LAKE JAMES CELLARS

204 E Main St, Glen Alpine, NC 28628  
Mailing: P.O. Box 359, Glen Alpine, NC 28628  
828-584-4551, Fax 828-584-6893  
Web: [www.lakejamescellars.com](http://www.lakejamescellars.com)  
Hours: Tue-Fri 11am-6pm; Sat 10am-5pm; Sun 1-5pm  
Location: Burke County – From Greensboro, take I-40 W to Exit 100 (Jamestown Rd). Go straight across Jamestown Rd and merge right onto Reep Dr. At the end of Reep Dr. turn left on US Hwy 70 to Glen Alpine. The winery is on the right in a historic textile mill building.

## 29 LAUREL GRAY VINEYARDS\*

5726 Old Hwy 421, Hamptonville, NC 27020  
336-GOT-WINE, Fax 336-468-4326  
Web: [www.laurelgray.com](http://www.laurelgray.com)  
Hours: Wed 1-6pm; Thu-Fri 10am-6pm, Sat 10am-5pm, Sun 1-5pm  
Location: Yadkin County – Take Hwy 421 to Windsor Rd exit 267 (1.5 mi west of I-77). At top of exit ramp turn right, go .1 mi to Old Hwy 421, turn right, Laurel Gray Vineyards is just ahead on left.

## 30 LUMIL VINEYARD\*

474 Suggs-Taylor Rd, Dublin, NC 28332  
800-545-2293, Fax 910-862-2799  
Web: [www.taylorlmg.com](http://www.taylorlmg.com)  
Hours: Daily 1-4pm; by appt. anytime.  
Closed Jan-Feb  
Location: Bladen County – South at I-95 Exit 46A on NC 87 S, 25 mi to Dublin.

## 31 LUMINA WINERY

206 S. Kerr Ave, Unit 112 A,  
Wilmington, NC 28403  
910-793-5299, Fax same  
Web: [www.luminawine.com](http://www.luminawine.com)  
Hours: Mon-Wed Noon-6pm; Sat 11am-3pm  
Location: West Hanover County – Take I-40 E to NC 132 (S College Rd.); go 1.7 mi and exit on to US 17 S (Market St) to downtown Wilmington. Go 1 mi and turn left onto S Kerr Ave. Go 0.3 mi and winery is on right next to Martin Self Storage.

## 32 MARTIN VINEYARDS

213 Martin Farm Lane, Rt 1256  
Knotts Island, NC 27950  
252-429-3542, Fax 252-429-3095  
Web: [www.martinvineyards.com](http://www.martinvineyards.com)  
Hours: Mon-Sun Noon-5pm  
Location: Currituck County – Take free ferry (800-BY FERRY) across Currituck Sound to Knotts Island. Follow Rt. 615 N 2.7 mi to Martin Farm Lane.

## 33 MOONRISE BAY VINEYARD

134 Moonrise Bay Landing, Knotts Island, NC 27950  
1-866-888-9463, 252-429-WINE, Fax 252-429-3393  
Web: [www.moonrisebaywine.com](http://www.moonrisebaywine.com)  
Hours: Open Daily Noon-5pm  
Location: Currituck County – From Virginia Beach, take Princess Anne Rd S to Knotts Island. Bear left at the Knotts Island Market and proceed one mi to vineyard on left. Or take the Ferry from Currituck, NC.

## 34 OLD NORTH STATE WINERY

308 North Main St, Mt. Airy, NC 27030  
336-789-WINE (9463), Fax 336-789-9060  
Web: [www.carolinaharvestwines.com](http://www.carolinaharvestwines.com)  
Hours: Mon-Sat 10am-6pm; Sun 1-6pm  
Location: Surry County – From US Hwy 52 in Mt. Airy, take US 601 N for one block to S. South St. Turn left. Continue to Independence Blvd. and turn right. Proceed to Main St, turn right. Winery is on the left with parking beside the building.

## 35 OLD STONE VINEYARD & WINERY

6245 US Hwy 52, Salisbury, NC 28146  
704-279-0930, Fax 704-279-3139  
Web: [www.osvwinery.com](http://www.osvwinery.com)  
Hours: Tue-Sat 11am-5pm; Sun 1-5pm; closed Mon  
Location: Rowan County – From I-85 take Exit 76A, and go 5 mi south on Hwy 52. Winery is on left, one mi south from town of Granite Quarry.

## 36 RAFFALDINI VINEYARDS

450 Groce Rd, Ronda, NC 28670  
336-835-9463, Fax 336-835-9330  
Web: [www.raffaldini.com](http://www.raffaldini.com)  
Hours: Wed-Sat Noon-5pm; Sun 1-5pm; and by appt  
Location: Wilkes County – From Hwy 421, take Exit 267. Follow signs. Vineyard is located on Groce Rd, 1 mi from the intersection of Swan Creek Rd and Clingman (Cedar Forest) Rd.

## 37 RAGAPPLE LASSIE VINEYARDS

3724 RagApple Lassie Lane, Boonville, NC 27011  
1-866-RagApple, 336-367-6000, Fax 336-367-4000  
Web: [www.ragapplelassie.com](http://www.ragapplelassie.com)  
Hours: Open 7 days a week Noon-6pm  
Location: Yadkin County – From 3 miles east of Boonville, at intersection of Hwy. 67 and Rockford Road. Winery on left.

## 38 RAYLEN VINEYARDS & WINERY

3577 US Hwy 158, Mocksville, NC 27028  
336-998-3100, Fax same  
Web: [www.raylenvineyards.com](http://www.raylenvineyards.com)  
Hours: Mon-Fri 11am-6pm; Sat 11am-6pm  
Location: Davie County – Via I-40 W, Exit 180, left on 801 S, right on 158 W; winery is 4 mi on right.

## 39 ROCKHOUSE VINEYARDS

Winery: 1525 Turner Rd, Tryon, NC 28782  
Mailing: 1308 Queens Rd West, Charlotte, NC 28207  
828-863-2784, Fax 704-333-8540  
Web: [www.rockhousevineyards.com](http://www.rockhousevineyards.com)  
Hours: Thu-Sun 1-5pm; closed January and February  
Location: Polk County – Take Hwy 74 to Hwy 9 (exit 167). Travel 2.2 mi south on Hwy 9 to Turner Rd. Turn left on Turner Rd and travel 1.5 mi to winery entrance.

## 40 ROUND PEAK VINEYARDS

765 Round Peak Church Rd, Mt. Airy, NC 27030  
336-352-5595, Fax 336-352-5581  
Web: [www.roundpeak.com](http://www.roundpeak.com)  
Hours: Thu/Fri/Sat/Mon 11am-5pm; Sun Noon-5pm or by appt  
Location: Surry County – I-77 to Exit 100. Left onto NC 89 W toward Low Gap. Right on Round Peak Ch Rd for 1.4 mi. Vineyard on the left.

## 41 A SECRET GARDEN WINERY

1018 Airport Rd, Pikeville, NC 27863  
919-734-0260, Fax 919-735-2564  
Web: [www.asecretgardenwinery.com](http://www.asecretgardenwinery.com)  
Hours: Thu-Sat 9am-6pm; Sun 1-6pm; other hours by appt.  
Location: Wayne County – From I-95 take exit 95 at Smithfield. Take 70 E to Goldsboro. Take 117N to Airport Rd. Bear right onto Airport Rd, winery 2 mi on right.

## 42 SHELTON VINEYARDS

286 Cabernet Lane, Dobson, NC 27017  
336-366-4724, Fax 336-366-4758  
Web: [www.sheltonvineyards.com](http://www.sheltonvineyards.com)  
Hours: Apr-Oct Mon-Sat 10am-6pm; Sun 1-6pm; Oct-Apr Mon-Sat 10am-5pm; Sun 1-5pm  
Location: Surry County – I-77 to Exit 93 Dobson. Turn right, then take first right onto Twin Oaks Rd. Go 2.5 mi to winery on right.

## 43 SILKHOPE WINERY

2601 Silk Hope Gum Springs Rd  
Pittsboro, NC 27312  
Mailing: 701 Duncan Farm Rd, Siler City, NC 27344  
919-742-4601, Fax same  
E-mail: [Wallybutler@Pinehurst.net](mailto:Wallybutler@Pinehurst.net)  
Hours: Sat 10 am-4:30pm; Sun Noon-4:30pm; Mon-Fri by appt  
Location: Chatham County – From Hwy 64 Bypass, north side of Pittsboro, take (exit 381) Hwy 87 N. Go 1.8 mi to Silk Hope Gum Springs Rd on left. Go 2.5 mi to winery on left, 300 yards past Emmaus Church.

## 44 SILVER COAST WINERY

6680 Barbeque Rd, Ocean Isle Beach, NC 28469  
910-287-2800, Fax 910-287-4817  
Web: [www.silvercoastwinery.com](http://www.silvercoastwinery.com)  
Hours: Mon-Sat 11am-6pm, Sun Noon-5pm; Seasonal hours Jan-Mar  
Location: Brunswick County – From Hwy 17, take route 904 W. Go 1.3 mi to Russtown Rd, turn right. Go 1.5 mi to Barbeque Rd, turn right. Follow road to the end.

## 45 STONY KNOLL VINEYARDS

1143 Stony Knoll Road, Dobson, NC 27017  
336-374-5752, Fax 336-386-8170  
Web: [www.stonyknollvineyards.com](http://www.stonyknollvineyards.com)  
Hours: Sat Noon-6pm; Sun 2-6pm  
Location: Surry County – I-77 90 mi north to Exit 82, Elkin Jonesville. Take a right on Hwy 67 E for 10 mi. Take left on Rockford Rd. Go 7 mi on Rockford Rd N. Make a left on Stony Knoll Rd, go 0.4 mi to winery on left.

## 46 STONY MOUNTAIN VINEYARDS

26370 Mountain Ridge Rd, Albemarle, NC 28001  
704-982-0922, Fax 704-983-2755  
E-mail: [stonymountain@vnet.net](mailto:stonymountain@vnet.net)  
Hours: Fri-Sat Noon-6pm; Sun-Thu by appt only  
Location: Stanly County – From Albemarle, take Hwy 24-27 E 4 mi. Turn left at Stone Mountain sign. Bear right then turn right on Mountain Ridge Rd, go 1 mi.

## 47 THE TEENSY WINERY

3661 Painters Gap Rd, Union Mills, NC 28167  
828-287-7763  
Hours: by appt only  
Location: Rutherford County – Take I-40 to the Rutherforddon Exit 103 (Hwy 221 S) to Thermal City. Turn west on SR 1321 then right on SR 1328 (Painters Gap Rd). Howard residence is first road on left beyond church.

## 48 THISTLE MEADOW WINERY

102 Thistle Meadow, Laurel Springs, NC 28644  
1-800-233-1505, Fax 413-803-9850  
Web: [www.thistlemeadow.com](http://www.thistlemeadow.com)  
Hours: Mon-Fri Noon-5pm; Sat Noon-4pm; Sun 2-6pm (2-4pm Dec-May)  
Location: Alleghany County – From the Blue Ridge Pkwy MP 246 take Elk Knob Rd for 3 mi., winery on left; From Sparta take Hwy 18 S for 12 miles. At intersection of Hwy 113 & Elk Knob Rd turn on Elk Knob Winery on is 0.2 mi. on right.

## 49 UWHARRIE VINEYARDS

28014 Austin Rd, Albemarle, NC 28001  
704-982-WINE (9463)  
Web: [www.uwharrievineyards.com](http://www.uwharrievineyards.com)  
Hours: Tue-Fri 10am-6pm; Sat 9am-6pm; Sun 1-5pm  
Location: Stanly County – From Charlotte, take Hwy 49 N to Hwy 73 in Mt. Pleasant. Take Hwy 73 E towards Albemarle for 9 mi. Turn left on Austin Rd. Vineyard is 0.5 mi on right.

## 50 WALDESIAN HERITAGE WINES

4940 Villar Lane NE, Valdese, NC 28690  
828-879-3202, Fax same  
Web: [www.WaldesianHeritageWines.com](http://www.WaldesianHeritageWines.com)  
Hours: Thu-Sun, 1-6pm  
Location: Burke County – From I-40, take exit 112 N to Valdese. Continue on Eldred Rd. to N Laurel St. Turn left on Villar Lane (2.8 mi from I-40) and follow signs.

## 51 WEATHERVANE WINERY

484 Hartman Rd, Winston Salem, NC 27127  
336-775-9717, Fax 336-248-2800  
Web: [www.weathervanewinery.com](http://www.weathervanewinery.com)  
Hours: Tue-Sat 11am-5pm; Sun Noon-5pm; Winter hours vary, please call  
Location: Davidson County – From Winston Salem take Hwy 52 south to Exit 100; take a right onto Hickory Tree Rd, take the second road to the left, Hartman Road. The winery is located at the second house on the right.

## 52 WESTBEND VINEYARDS

5394 Williams Rd, Lewisville, NC 27023  
336-945-5032, Fax 336-945-5294  
Web: [www.westbendvineyards.com](http://www.westbendvineyards.com)  
Hours: Tue-Sat 11am-6pm; Sun 1-6pm  
Location: Forsyth County – Hwy 421 to exit 246. Go west on Shallowford Rd for 2 mi. Left onto Williams Rd. Winery is 4th drive on left.